

# Specialist in lift electronics



P DAHL

# The full experience

For almost 25 years P DAHL has specialized in lift electronics and has slowly grown to a firm position as the largest supplier of lift electronics in northern Europe. Early on we understood the importance of not only supplying high quality products but also to supply knowledge.

Our support team have always had an important position in the company and always worked close to production, sales and development. Supplying information and knowledge to our customers have been a key element when building our reputation.

More than once we've helped customers with more than just the products we supply, so the step to supply more than just electronics wasn't a very big one.

Today we can offer our customers the full experience of our knowledge and we supply everything from complete lift solutions to lift electronics, motors, speech processors and control units.

Peter Dahl, President

4

## P DAHL

Building a great lift system  
The complete package  
Controlling the lift

8

## Controlling the lift

Lift control systems  
Bluetooth units  
Overspeed Governor  
Standby units  
Positioning

16

## I/O Units

CAN Bus gateways  
In and Output cards

20

## Signalisation and user input


Floor indicators  
Push buttons  
Speech processors

26

## Products

pdahl

# 25 years of building great lift systems



Combining the component to build a great lift requires great skill. In a perfect world every lift would have separate machine rooms and spacious shafts, but the reality is seldom that. Space is often an issue and skill is required to fit everything together.

At P Dahl we have a team of technicians specialized in different fields - ready to help you put together a great lift.

Whether your lift is a new lift or an old lift requiring modernization we can supply whatever you need. We work with the most well-known producers in the business to find products that have the high quality and reliability that is required to build great lift systems.

P DAHL has for more than 20 years developed electronics and lift control units. We've been a part of the lift industry for many years and supplied the world's leading lift companies with electronics. We've built open systems that is easy to adapt and to build in to any system. We've always worked close to our customers and been responsive to their need.

This has enabled us to build a product line that is very versatile and competitive. Quality and durability has always been key words in production and development, and we know the value of a happy, returning customer.

For things we do not produce ourselves we look to producers that have the same high standards as ourselves. Well known producers with a good history and innovation to keep their products updated. We have several partners we've worked with for many years.

Sometimes we find that there is a void to be filled, when there is some functionality that are missing that could improve the lift. In those cases we bring our development team together to let them work their magic.

The S4 is of course one of those products. The S3 is still going strong, but as we move into the future. More and more functions are demanded and remote control is one of these functions that we feel will be essential.

BCU01 is also a product we felt was missing. The brake control unit allows for better control of the lift brake system, reducing the number of transformers needed and limit the wear of brakes and brake resistors.

## Putting in all together

Being able to supply all the parts of the lift gives us a powerful control of the lift system. We can make sure that the entire lift works together as good as it can. We can select each part to be a perfect fit in a well-oiled machine.

Our main strength is the full package and that is where we excel. Using CAD tools we put together a lift based on the building requirements. This powerful tool can ensure that the lift supplied fulfills all requirements when it comes to safety and support. We can easily calculate that every detail of the lift can manage the forces it is exposed to.

This allows to create lifts that are of optimal size and strength. There is no need to overcompensate details to counter bad calculations. This opens up for leaner and lighter lift without decreasing security. A lighter lift also means a lift that is more power efficient and easier to install.

Putting your lift in our hands will ensure that you on the day of delivery gets a lift fully configured and ready to install, complete with all required papers and documentation.



# Our strength - the complete package

P DAHL has since the start specialized in lift systems and since many years we've been northern Europe's largest supplier and manufacturer of lift electronics. With vast knowledge of lift systems and experienced technicians we can offer our customers the complete and fully configured lifts of high quality.

## Reliable and energy efficient lifts

---

The lift package we deliver is complete packages where everything from the shaft details to the lift car, electronics and interior has been selected to form a lift which is reliable and have optimal energy efficiency for every need.

We offer two basic packages that we then adapt individually based on our customer's requests and demands.

Whether the lift will be installed in a few story apartment building, a high office building or an industrial facility we can tailor the system for your needs.

## Speed loading capacity and comfort

---

To find the balance between speed, loading capacity and comfort the fits the customers need is our strength. With two basic configurations - rucksack or straight, we cover most uses. Rucksack offers a simpler lift made for smaller shafts and slower lifts.

Straight configuration is the solution for lift systems where the shaft don't have the same limitations. The straight configuration offer a more stable system which means that the speeds can be higher and the loads can be bigger without limiting the comfort.

## Blocking - a question of speed and load

---

By using different rope ratios you can use the capacity of the motor in different ways. By using pulleys you can redistribute the load of the motor.

Depending on the load and the speed we use 1:1, 2:1 and 4:1 ratios.

## With or without machine room

---

The placement of the lift and its main purpose is also a factor when you chose to use a machine room or not. A machine room requires space but also decreases the noise. While putting the machine parts in the shaft requires less space.

## CAD to ensure the installation and the optimal design

---

By using CAD programs we can ensure that the lift is optimized for your building. Using CAD we can figure out the best way to build a lift when space is an issue and we can calculate which parts of the lift needs to be reinforced to maintain the load of the lift, without the need to overcompensate and without restricting security.

This allows for smaller, more optimized and cost efficient lifts which are easy to install when we early on can adapt features to fit in the shaft and avoid surprises when the lift is delivered.

## The interior - the face of the lift

---

The lift car, floor indicator, call buttons becomes the face of the lift and the travelers connection to the lift system. Which is why it can be the most important part of the lift, depending of the placement and purpose of the lift.

For office buildings or exclusive apartment buildings the lift can be an important tool to mediate success, prosperity, quality and ambition.

We make sure to tie up the complete picture by supplying a lift car that lives up to the expectations of the customer.

## The Control unit - the brain of the lift

---

The electronics behind it all is delivered fully configured and ready to be installed. Our lift computer is the most sold lift control unit in Sweden and offer almost limitless configuration possibilities and uses an interface that is as easy to use as reliable.

## Documentation - the last piece of the puzzle

---

When the lift is delivered and ready to use you can use our documentation portal to download all documents necessary to maintain the lift. It will be easy to find documents for certification and future maintenance.



## Controlling the lift

The core of P DAHL has been the creation of great lift control systems. Systems easy to configure, install and maintain. For more than a decade the S3 has dominated the nordic lift market. The S3 has been hard to follow, but after years of development it's successor will soon make its appearance...

### Stability and performance

Launched almost two decades ago, the S3 has never stopped evolving. It's stable architecture was built to adapt, and the power to adapt has allowed it to still be a powerful and competitive lift control unit.

Earlier this year we launched products that allowed you to control and configure your lift through an app available both to iPhone users and Android user.

Using the CAN bus protocol, we've designed a number of products to make installation even easier. Products that limit the number of cables needed to install the lift system.

### Taking the next step

The S4 has been long in the making. Thousands of hours of development is finally at an end and the result is a control unit that is a product of it's time.

Our demands have been high and we wanted a product that would live for another 20 years. A product that is versatile, stable and prepared for what the future will bring.

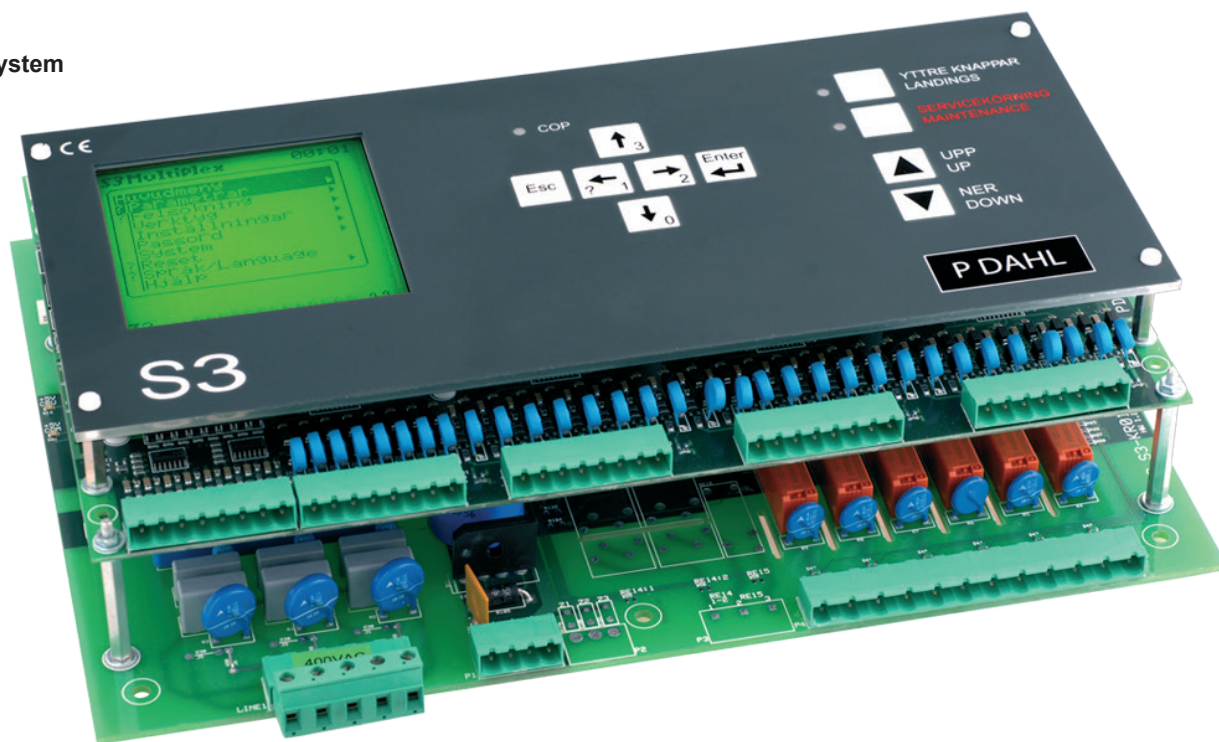
Ignoring aging display system and keyboards, we've chosen to focus on a system configurable entirely with a connected device, such as a laptop, smart phone or tablet.





# S3

## Lift control system



Launched almost two decades ago, the S3 has never stopped evolving. It's stable architecture was built to adapt, and the power to adapt has allowed it to still be a powerful and competitive lift control unit.

Earlier this year we launched products that allowed you to control and configure your lift through an app available both to iPhone users and Android user.

All in-/outputs are optoisolated, the processor works in a galvanic separated environment. The computer has a built-in display and a keyboard, which makes it possible to perform all programming of the system on job site.

In case of errors on the lift system, this will be stored in the computer, together with the time and date, providing effective troubleshooting for the technician. The system clock will keep running even during voltage drops with the help of a back-up capacitor.

The S3 control system is available in a large variety of types. The difference between the types consists of different hardware configurations. The hardware configuration stretches from 8 inputs, 8 outputs, 16 in/outputs and 10 relay contacts to 16 inputs, 16 outputs, 48 in/outputs, 18 relay contacts and 2 CAN buses.

The S3 positioning system handles magnetic sensors, photocells and incremental encoders.

The software is written in an event based programming language, which simplifies adding of new features even for big and complex applications. The lift control system handles both 24V positive and negative logic.

### Features

- Multi language support
- 2-32 floors (more on request)
- Lift in group 1-8
- 2 door sides
- Pushbutton controlled with occupied lamp or Down/Up-collective
- Phase failure detection
- 24-230 VAC inputs for safety circuit (see part number)
- Surveillance of the motor temperature
- Travel time high-speed or low speed
- Surveillance of contactors
- Pawl device
- Fan control for cabin
- Fan control for lift motor
- Fan control for cabinet
- Built in thermostat for control of the temperature of the cabinet
- Swing door and/or slide doors
- Door open in floor (not for EN81 installations)
- Zone system for levelling (with open or closed door) and early door opening
- Fullload / Overload
- Parking floor, two different destinations
- Independent service
- Fire service
- Floor indicator
- Arrival signal
- Suspension of landing calls
- Priority calls for landings and car
- Fire service two landings
- Fireman service
- Key code
- Floor indicators decimal and/or binary
- Direction arrows
- Acoustic arrival signal
- Hydraulics/1speed/2speed/VVVF
- Floor positioning with encoder or photocell sensors with flags
- Short travel
- Fault history with type, time and date
- Fault alarm from the computer
- PTC protection - No fuses for the internal 24VDC supply
- 2 CAN-Bus Interfaces

# S4

## Lift control system

When developing the successor of S3, Swedens best selling control unit since ten years back, we didn't know how far we would go. Expectations were high - so there could be only one answer - all the way.

Perfection takes time and so we chose not to rush - and today we can present the S4 - the next step in control system evolution.

### Easy to use, easy to control

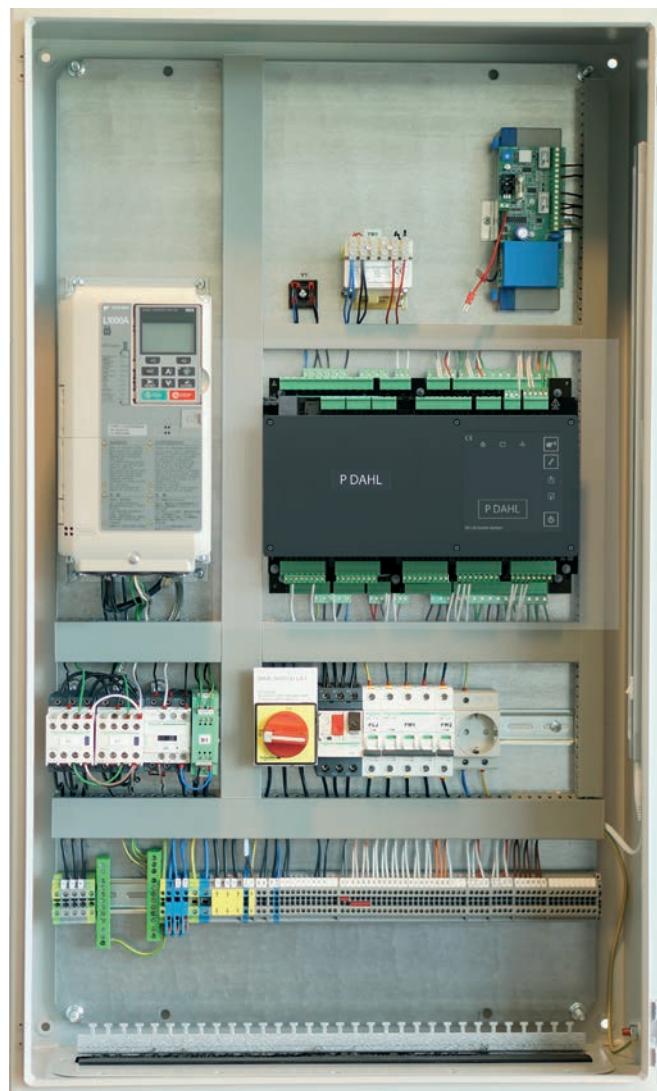
The S4 has been long in the making. Thousands of hours of development is finally at an end and the result is a control unit that is a product of it's time.

Our demands have been high and we wanted a product that would live for another 20 years. A product that is versatile, stable and prepared for what the future will bring.

Ignoring aging display system and keyboards, we've chosen to focus on a system configurable entirely with a connected device, such as a laptop, smart phone or tablet.

### Built on a reliably system

The S3 has been in production for more than ten years and is the most sold control system in Sweden. We knew that it's successor must be equally reliable and share it's high quality.



### Using the tools of today

The key feature of the S4 was to supply an easy to use control unit that can be installed and configured in minutes. Using our iPhone or Android app, you can easily configure the lift and setting it up in minutes.

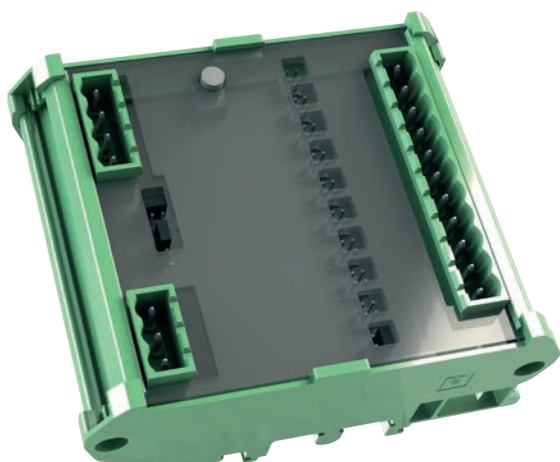
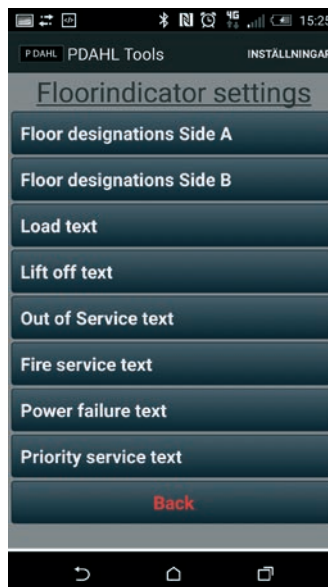
Configurations can be backed up and restored or even mailed to our support if help is needed.

## S4-BT01

### Bluetooth Unit

The S4-BT01 is a bluetooth unit which allows you to control your lift control unit with an Android or iPhone app. The S4-BT01 is connected to the CAN bus and also have additional inputs and outputs.

The app allows you to set up your lift in minutes with easy to use menus and options. You can also store and backup settings and import received settings.



## S4-I10-BT

### Bluetooth Connected I/O Unit

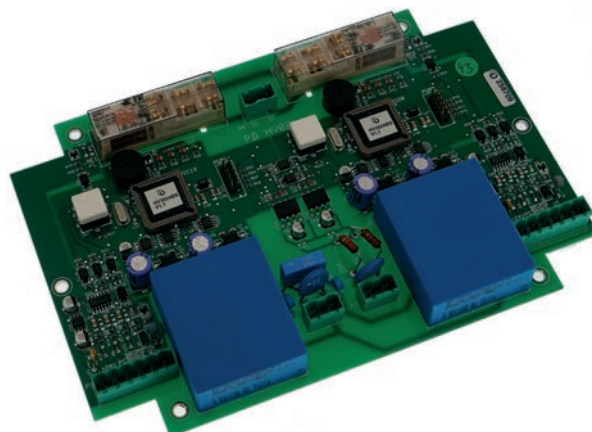
The S4-I10-BT has the same features as S4-BT01 and also has 10 additional inputs that can be use to connect more units.

## HV02

### Overspeed Governor

HV02 is a unique solution of supervising the speed of the lifts. The supervision is performed by two separate units (microprocessors) supervising the brake and the speed of the lift. In case of overspeed or other errors, HV02 shuts down the lift to prevent dangerous situations. The lift is not allowed to make new starts, until a technician eliminates the error, and resets the overspeed governor.

Each unit has its own separate power supply. The shaft encoder feeds pulses to the microprocessor. The processor measures the time between these pulses and if the time between these pulses is too short then the output relay falls. The output relays are fallen when the lift is parked. The output relays are activated by an external signal when the lift starts.



# S4-CTC01

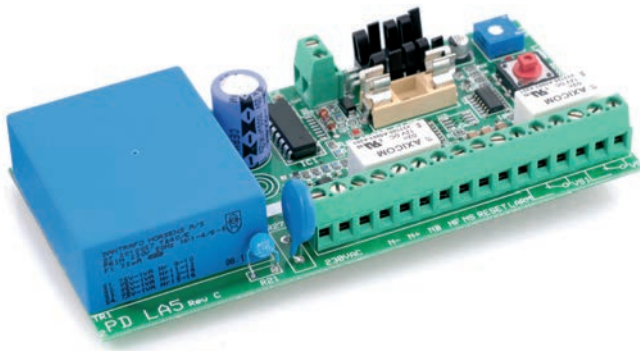
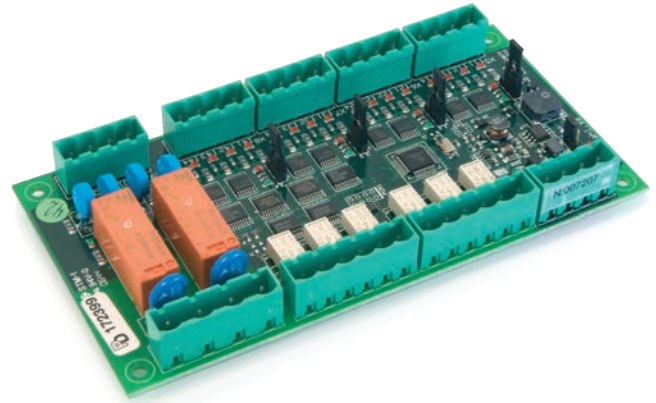
## Control Unit

S4-CTC01 is a multifunctional control card for your lift. Install it in the car roof and control door machines, lights, fans - whatever you need.

The S4-CTC01 has 16 (4x4) inputs, 8 (6+2) relays, built-in buzzer and 4 outputs. The input operates in both positive and negative logic – you can easily change from one to the other at any time by moving a jumper on the circuit board. The state of each in- and output is visually indicated with LED indicators.

There are 6 relays, divided into 2 groups to control the doors. Dividing the relays into groups makes it easy to disable a door side by just unplugging the connector.

The S4-CTC01 is connected to the CAN-bus of the S3 control systems, which provides a fast and easy installation, with a minimum of cables. S4-CTC01 has a built in termination to provide an as good as possible communication with the controller.



# LA5

## Standby Unit

The LA5 handles emergency power supply during power failure.

The charging is divided into three steps. During the first step the accumulator is charged with a very small current to prevent damage to a discharged accumulator.

When the voltage has reached the lower limit for normal charging the accumulator will be charged with maximum current, this is the second phase. In the third step the charge will decrease and the standby unit will keep the accumulator charged with a maintenance charge.

During the first phase the accumulator cannot be loaded.

Accumulator	6V 3Ah 12V 1,2Ah 12V 2Ah/2x 12V 2Ah
Charge current	0-250mA

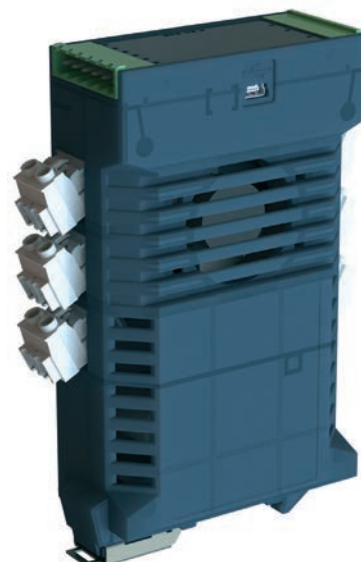
# BCU01

## Brake Control Unit

The BCU01 is a control unit used to control two individual brakes. The output voltage can be programmed in the BCU01 and allows a better control of the power supply.

Using the BCU01 means that you can limit the number of transformers used, thus require less space and lowering the costs of the system.

The BCU01 maintains the power supply to the brakes which means that ramping can be controlled. This reduces the wear on the brakes and brake resistors.



# POSITIONING

The incremental encoder uses a belt running through a sensor to read the position of the lift. The encoder reads pulses from the sensor and translates them into distance with the help of the lift speed and a number of calibrating tools.

## Shaft positioning, Counter

The incremental encoder set combined with the S3 control system gives you a high precision positioning system. There are four different incremental encoder sets, the encoders are the same (50p/rev) but the mechanical parts are designed to fit the lift depending on the type of lift and the amount of space in the shaft.

## Motor Feedback

The speed control set includes the brackets needed for an easy and exact installation of a pulse generator (encoder). Along with the axle coupling (included in the set) and the pulse generator bolt (not included in the set) this is all you need for a closed loop speed controller.

There are two different sets, the first one is a floor stand and the second one is mounted on the side of the motor bed.

## Axle Coupling

The axle coupling consumes the vibrations and deviations in the motor axle. It allows a maximum  $\pm 5\text{mm}$  of radial and axial deviation. The coupling is available for three different axle combinations.

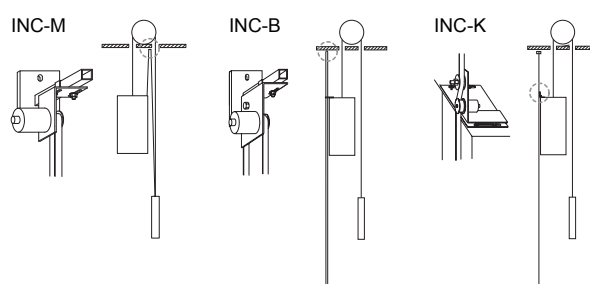
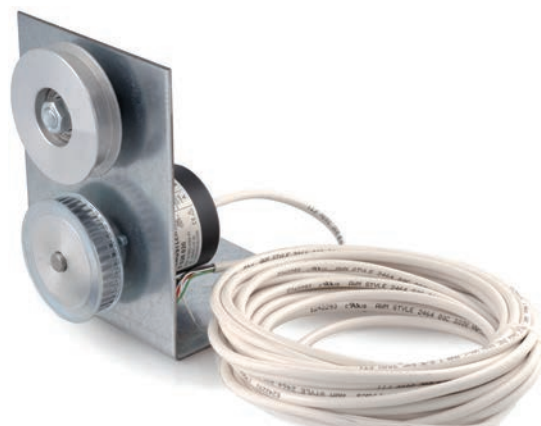
## Pulse Generator Bolt

The pulse generator bolt allows you to attach the axle coupling to the motor axle. The bolt comes in four sizes M12, M14, M16 and M20. It is delivered with 2 nuts to lock the bolt in the motor axle.

## Photocell

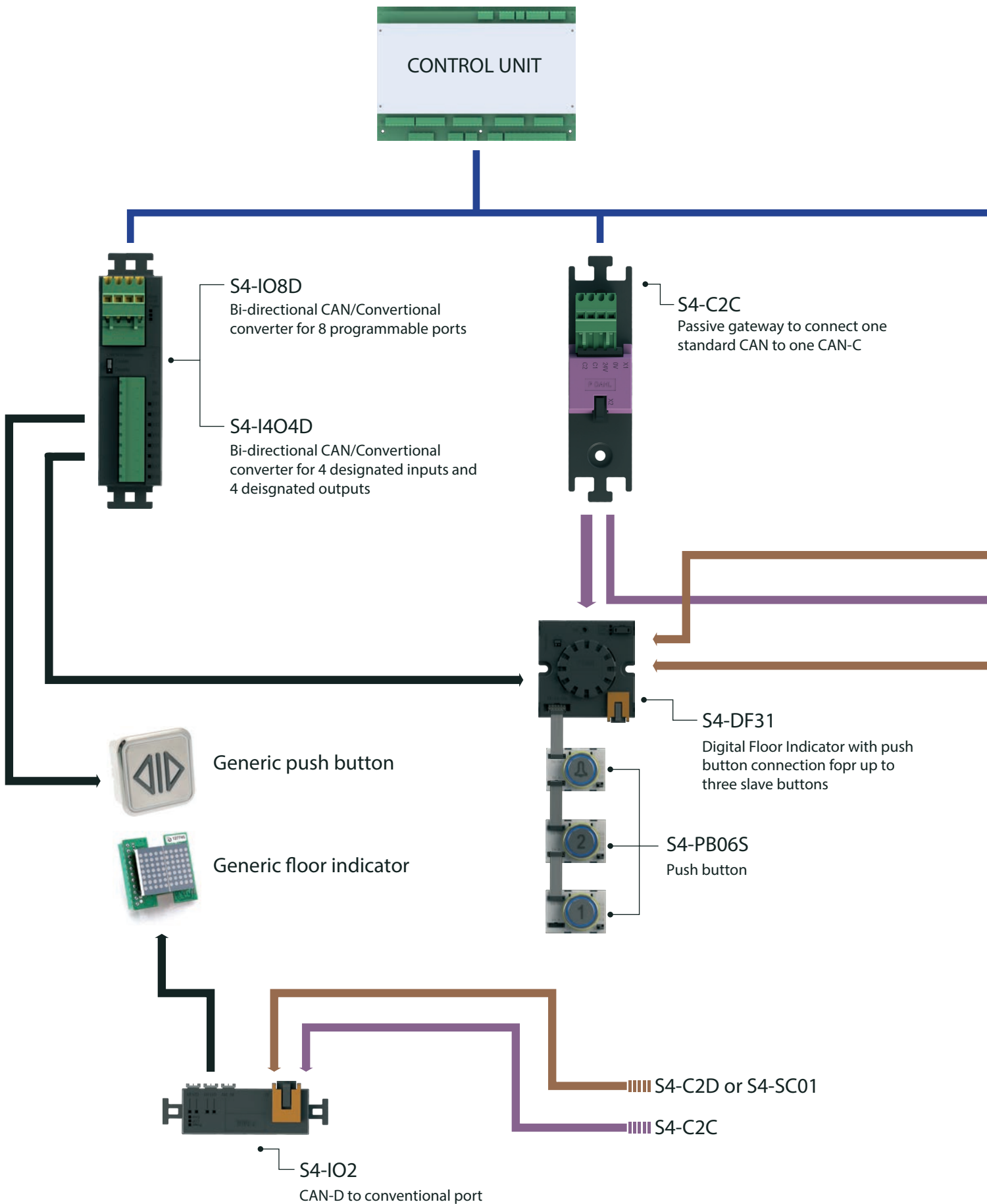
One of the traditional ways to position the lift is to use flags and photocells in the shaft. We have developed an easy and swift-to-install set of brackets, where all needed for the installation is included. Note that flags are not included in the set, the number of flags needed depends on the type of lift and number of the floors. The sets consist of:

- Brackets
- Photocells, (2 or 3 depending on type of lift)
- Piano-wire
- Expander bolts





# I/O Units





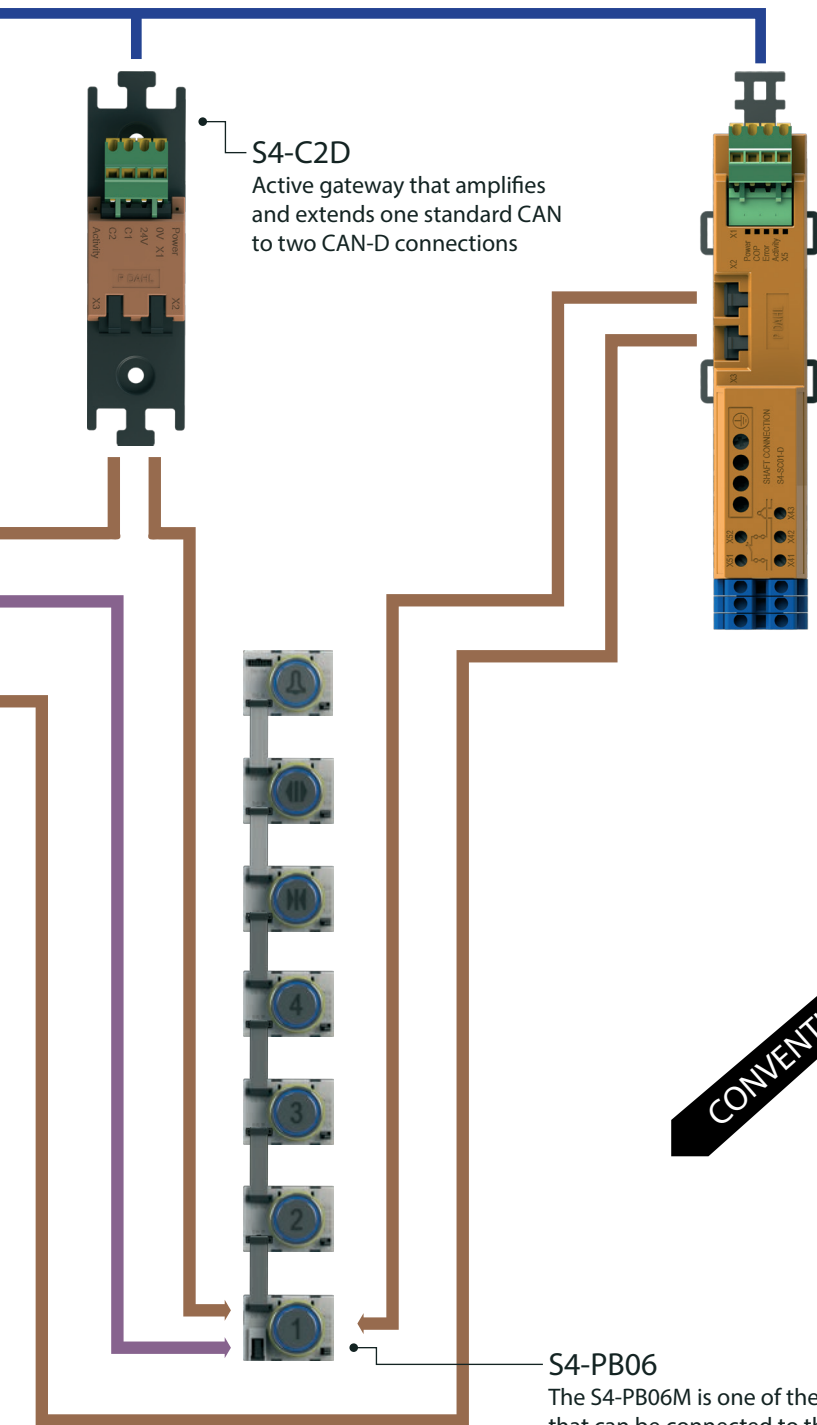
# Easy to install. Easy to connect.

P DAHL has always strived to create easy-to-install solutions. One of the key parts of the company is our Electrical Packages division that preinstalls and preconfigures solutions for our customers.

We have a very good understanding of lift installation and configuration and strive to create and produce solutions that are as easy to install as possible.

As a part of that solution we've developed a wide array of I/O units that allow for easy connection, limiting the number of cables and wires needed.

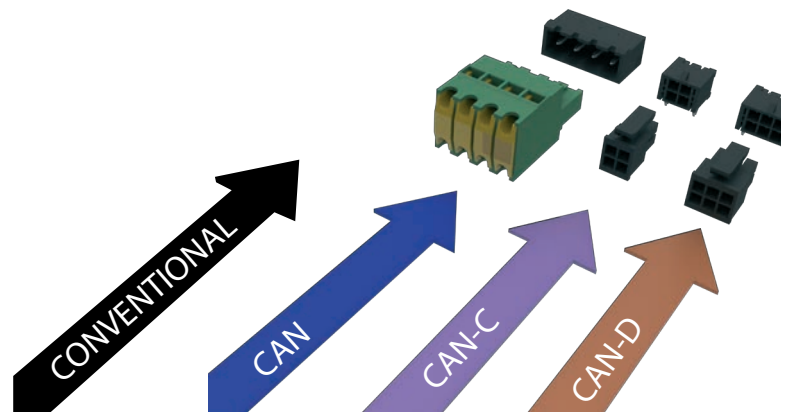
The possibilities to combine different types of ports and I/O-units also makes our packages easy to configure and adapt to existing systems.



**S4-C2D**  
Active gateway that amplifies and extends one standard CAN to two CAN-D connections

**S4-SC01**  
Active gateway that amplifies and extends one standard CAN to two CAN-D connections.  
Also have connections for door breakers

**S4-PB06**  
The S4-PB06M is one of the products that can be connected to the CAN-C and CAN-D connections.  
The S4-PB06M can handle up to 7 slave units.

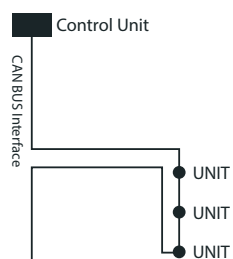


# CAN BUS Gateways

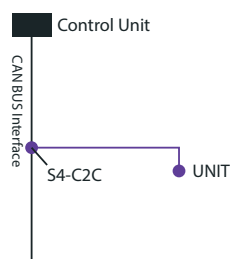
When lifts grows larger - spanning more floors and using more connected devices the cabling and interfaces can become an issue.

Using a gateway is a simple solution that allows technicians to reduce the number of cables used. Using an active gateway also reduces the interference in the CAN Bus system by encapsulating the connected units from the rest of the CAN bus system. An active gateway also amplifies the signal, allowing for longer wiring and even larger systems.

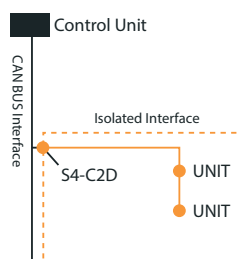
Conventional CAN



Passive Gateway



Active Gateway



## S4-SC01

### Active Gateway and door control

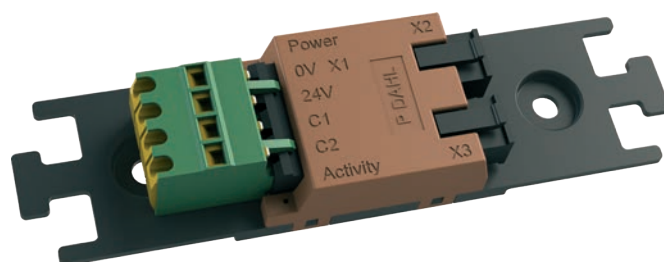
The S4-SC01 is an active gateway which enhances the CAN signal and allows for two CAN units to connect.

The S4-SC01 also allows the connection of two door contacts and facilitates fault tracing when the S4-SC01 can report more precisely when a door contact is open.

## S4-C2D

### Active Gateway

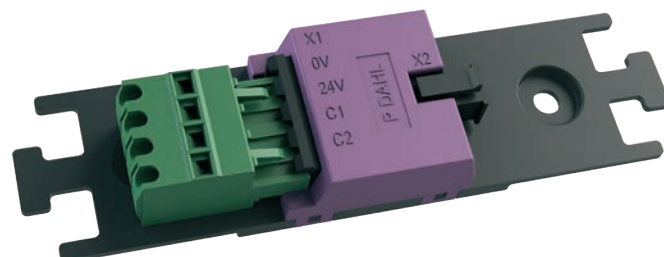
The S4-C2D01 is an active gateway allowing for the connection of two S4-PB06MD or S4-DF12. The active gateway allows longer cables to be used, extending the signal even further.



## S4-C2C

### Passive Gateway

The S4-C2C01 is a passive gateway allowing for the connection of one additional S4-PB06 or S4-DF12.



# IO-Units

P DAHL has a number of IO-units designed to make installation as easy as possible. The units add extra in-/outputs to the CAN-bus for each card you connect.

The IO units can be placed anywhere in the lift system and can be mounted either on a DIN-rail (for use in car top control) or directly on the plate (for use in car operating panels).

Most IO cards are connected to the CAN-bus (4-wire system), which means that there is no need to cut any cables – just peel the cables.

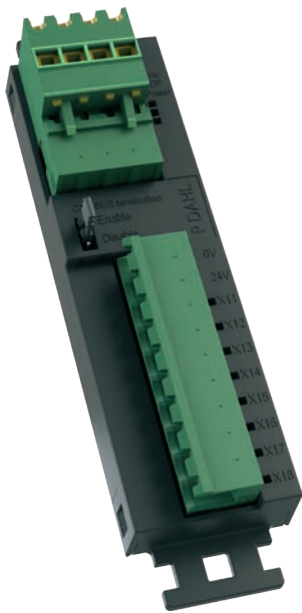
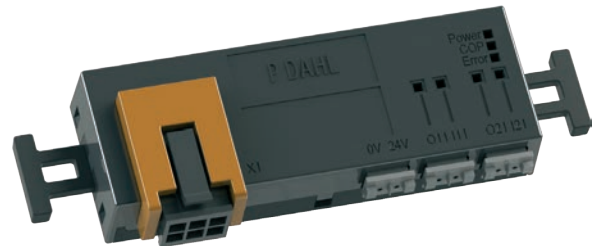
LED indicators indicate the state of each IO and the status of the CAN-bus connection. S4-IO8 is available for both positive and negative logic (both common minus and common plus).

## S4-IO4

### CAN Bus Hub

The S4-IO4 is a small CAN BUS unit with CAN-C or CAN-D input and 4 programmable I/O ports. The S4-IO4 is excellent when connecting push buttons which dont require that many I/O ports.

The S4-IO4 is a slim IO unit that is meant for installations where space is limited.



## S4-IO8D

### CAN Bus/Conventional Converter

The S4-IO8D has 8 programmable bidirectional in-/outputs.

## S4-I404D

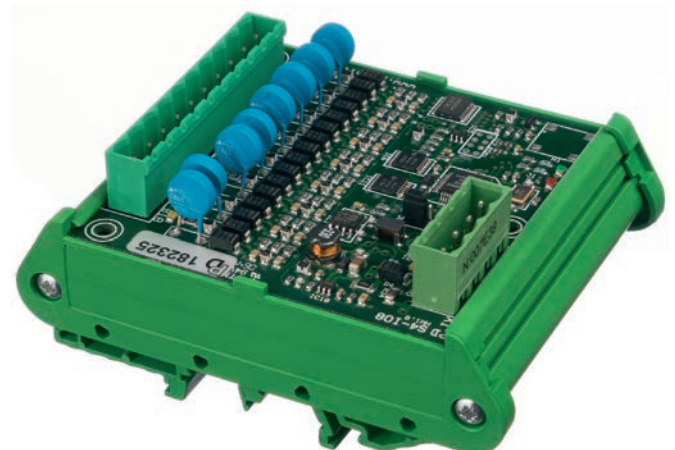
### CAN Bus/Conventional Converter

The S4-I404D has 4 bidirectional inputs and 4 output.

## S4-IO8

### CAN Bus/Conventional Converter

The S4-IO8 has 8 programmable bidirectional in-/outputs.



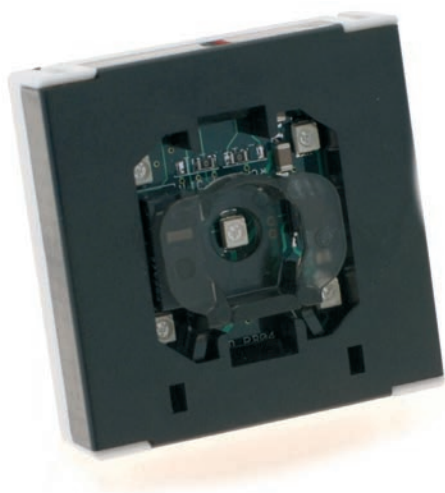
## Push buttons

P DAHL has a long history of designing and supplying panels with state of the art push buttons. Materials range from brass, to polished steel with engraved or printed symbols and texts.

We deliver fully assembled panels with push buttons, built in buzzers, floor indicators, speech processors and emergency phones.

Our configurations fulfill the criteria's of the EN 81-70 standard. The buzzer is used for audible registration feedback (and as an overload buzzer) and the halo or center LEDs for visible feedback.

	PB04	S4-PB05	S4-PB06
Power supply	24 VDC	24 VDC	24 VDC
Measures, DxWxH (mm)	18x43x40	23,8x44x44	23x44x60
Connection	Conventional	CAN-BUS	CAN-C or CAN-D



### PB04

#### Push Button

PB04 is a push button using conventional connections. PB04 is a perfect alternative when building smaller lift systems.

- Conventional interface
- EN 81-70 (both visible and audible registration feedback)
- Low power consumption

### S4-PB05

#### Push Button

S4-PB05 is a series of standard CAN-bus connected push buttons. The CAN-bus connection is a 4-wire system, using the Quick Connection System (Phoenix QUIX-series), providing fast and easy installation. Connect a S4-PB05 master push button to the CAN-bus, this button hosts up to 7 slave pushbuttons connected with ribbon cable.

- Standard CAN-bus interface
- EN 81-70 (both visible and audible registration feedback)
- Stackable, up to 7 slave buttons per master button connected with ribbon cable. 45-500mm c-c.
- Low power consumption



# S4-PB06

## Push Button

The S4-PB06 is a push button based on the S4-PB05. The S4-PB06 has all the features of the S4-PB05 but is a slimmer version for installations that require less space. The connectors are also smaller and uses our CAN-C and CAN-D interface.

In addition the S4-PB06 has an extra set of halo lights which can be used to indicate special calls.

As with S4-PB05 the S4-PB06 uses a master unit to connect up to 7 slave units to the CAN Bus.

- CAN-bus interface
- EN 81-70 (both visible and audible registration feedback)
- Stackable, up to 7 slave buttons per master button connected with ribbon cable. 45-500mm c-c.
- Low power consumption
- Compatible with S4-PB05
- Depth only 23 mm



## Surface mounted box

Tight installations sometimes don't allow the installation of recessed buttons.

For these cases we've developed a surface mounted box to use with S4-PB06.

The box is only 23 mm deep and made of sturdy, durable plastic material that allows for fast and easy installation in most environments.

# S4-PB05M-IO

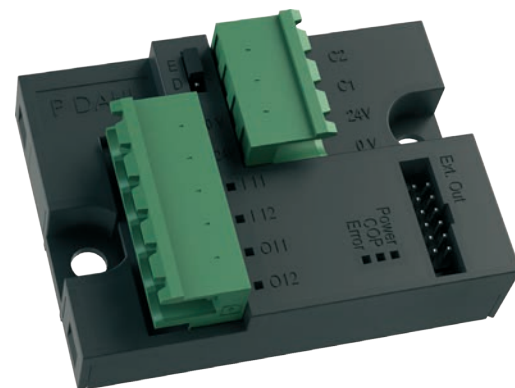
## IR/RFID Remote Receiver

The IORC IR/RFID receiver is a powerful tool to facilitate the use of car lifts of to just add extra security to your lift.

The IR receiver is installed into the panel of the lift. IR receivers are controlled by the IRRC01 transmitter that sends an IR signal to the transmitter to control the lift.

The RFID receiver is also installed in the panel and allows the use of RFID tags to control the lift.

Pairing the transmitter with the receiver is done with S3/S4 main computer. Each paired unit can be programmed with different functions depending on the type of lift or security required.





## Digital Floor Indicators

### Features

- Static/Scrolled information
- Arrows
- Text messages (user defined)
- Small/Large digits
- Easy programming/reprogramming (onboard RS232 interface)
- Output for arrival signal
- CAN-bus connection
- Easily assembled in panel
- Programmable inputs
- Built-in arrival signal (optional)
- Built-in buzzer
- Available in both blue and red

We offer a number of different digital floor indicators with different features. All our floor indicators are easy to program and allow a large number of arrows and letters. The displayed information can either be scrolled-in or displayed in the traditional static way.

Our floor indicators aren't programmed on delivery, but programming is done in seconds. All you need is a PC, a programming cable and the floor indicator programming software for Windows - which you can download freely from our website.

When the floor indicator is connected to the S3 CAN-bus, programming is done from the control system (no cable or software needed). The floor indicator can be reprogrammed over and over again while running (this includes changing the number of floors, the name of the floors, way of mounting, text messages, the appearance of arrows etc.)

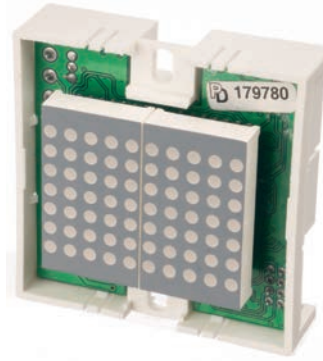
		DF04	S4-MIO2	S4-MIO3	S4-DF12	S4-DF31
Interface		CONV.	CAN	CAN	CAN-C/CAN-D	CAN-C/CAN-D/Conv.
Overload buzzer			•	•	•	•
Speech Processor					◦	
Dot display		10x7	16x16	32x16	32x16	16x16
Power supply		24VDC	24VDC	24VDC	24VDC	24VDC
Measures	Display (mm)	55x55	75x75	138x75		41x41
	Unit (mm)				97x220x23	65x68x19
Consumption Current	Max	70 mA (all seg. set)				
	Typical	25 mA				
Output		1	0	2		3 slave buttons

• = Included ◦ = Optional

## DF04

### Digital Floor Indicator

The DF04 is a floor indicator with several features. DF04 can be mounted either vertical or horizontal. This gives the floor indicator different features. When mounted vertically DF04 displays a large digit (10x7 dots, digit height 42 mm), when horizontally two smaller digits (5x7 dots, digit height 30 mm).



## S4-MIO2

### Digital Floor Indicator

The S4-MIO2 is a digital floor indicator with a larger display and new features. The S4-MIO2 has a 16x16 dot display which offers displayed information of higher resolution. The AS02 arrival signal can be built in as an option.



## S4-MIO3

### Digital Floor Indicator

The S4-MIO3 is a larger version of the S4-MIO2. With its 32x16 dot display it is ideal for displaying information demanding even higher resolution. The AS02 arrival signal can be built in as an option.



## S4-DF12

### Digital Floor Indicator

S4-DF12 is a surface mounted floor indicator. Only 23 mm thick, the S4-DF12 aims at installation that require less space for installation or where recessed indicators can't be used. The DF12 is fitted inside a durable surface mounted box. Using our quick connect system the S4-DF12 connects to the CAN bus system through the S4-C2C01 or the S4-C2D01.

The S4-DF12 can also be delivered with an optional speech processor.



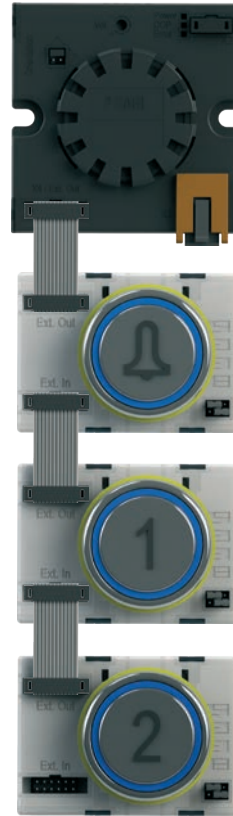
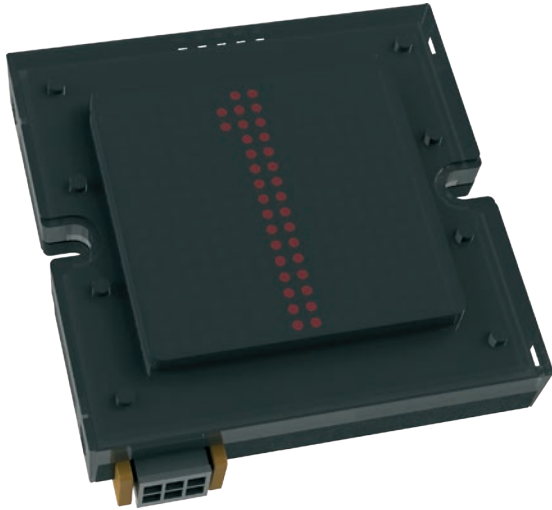
S4-MIO3 installed in a surface mounted box

# SF-DF31

## Digital Floor Indicator with push button connectors

S4-DF31 is a 16X16 dot digital floor indicator with push button connectors allowing 3 slave push buttons to be connected. The S4-DF31 also has a built in acoustic signal.

The S4-DF31 is a slim unit meant for tight installations. The unit is only 19 mm thick and can use either conventional, CAN-C or CAN-D interface.



S4-DF31 with three connected S4-PB06S push buttons

# TFT Infodisplay

## TFT High resolution floor indicator

Our high resolution information displays are an option for customers who demand high quality and easy to maintain lift information systems.

The display shows floor destinations and information stored in a cloud based system, which is easy for customers to maintain.

RSS-feeds can also be added for news and dynamic information together with weather information and local news if an existing internet connection is available.



## Features

- Display WXGA
- 7", 10" or 15"
- 16M colors, 89° view angle
- Coretex A7 Dual Core
- 1GB DD3 RAM
- SATA HDD connector
- 3G, WiFi or Ethernet
- Full HD
- HDMI and VGA input
- LED background illumination
- Audio



# SP02

## Speech Processor

SP02 is a speech processor developed by P DAHL. SP02 has improved sound quality, media handling and storage. The speech processor is fitted with a MicroSD card slot which allows for considerably improved storage space.

The SP02 is easy to configure together with our control unit S3 and allows for hours and hour of music and sounds. When using music the speech processor fade out the music before the floor designation is announced and then fades it in again.

The SP02 is pre-configured on delivery but it is possible to use our SP02 software if you wish to modify settings and sound. software for how to configure the SP02 is available at our website.

The SP02 delivered with a 512Mb MicroSD card.



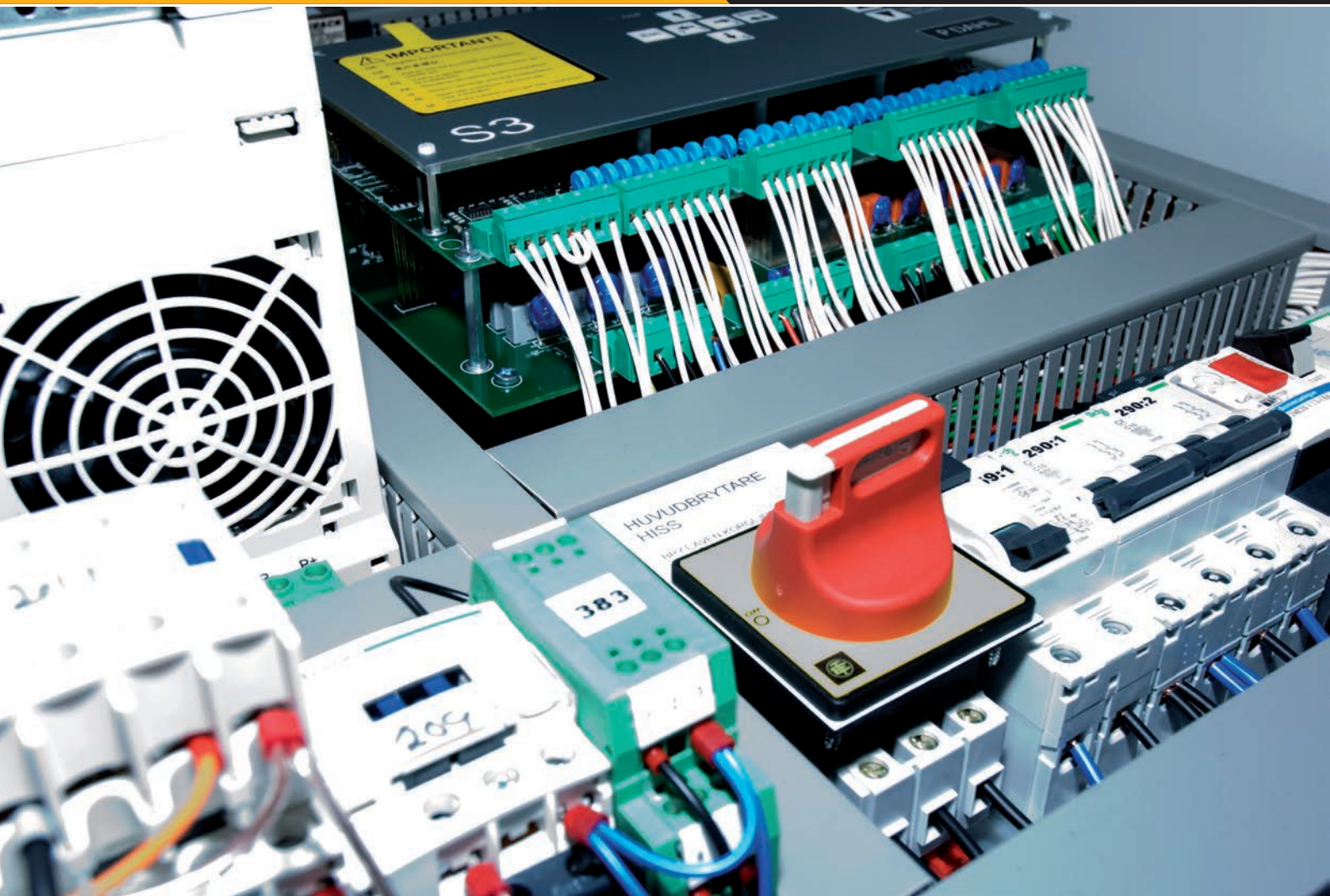
		SP02
CAN Bus connection		•
No. of floors		∞ *
Power Supply		7-36 VDC
Max current	Standby	12 mA
	Music at max volume	90 mA
Storage		MP3

\*) Only limited by storage space

## Speech processor resources

P DAHL have a sound bank with the most common phrases in a number of languages. If a phrase or language isn't available we can arrange more recordings upon request.

We've used both female and male voices to record phrases



## Electrical Packages

Today we build fully equipped electrical cabinets fitted with control system, connections, frequency inverters etc. We offer Car top Control cabinets, overspeed governor, shaft installation harness, overload sensors, shaft lightning, emergency systems and fully equipped panels with push buttons, floor indicators, speech processors etc.

Our packages come preconfigured and complete with all documentation and accessories needed to install the lift. When installed minimum configuration is needed to get the lift up and running. And if guidance is needed our support team is just one phone call away.

To facilitate the need of our customers and the installation location we have a variety of cabinets in different sizes and shapes.

Contact our sales department for more information.



## Panels

Few things in a building are as noticeable as a lift. The lift becomes the natural meeting point for visitors, co-workers and neighbors on the way in and out of the building.

For brief moment perfect strangers meet in a confined space of but a few square feet and exchange pleasantries or awaits the destination in silence with their eyes fixed on a detail.

The lift has become such a natural part of everyday life that we've since far back have developed a social convention for how to travel in a lift. All this because there is few moments in life we let strangers so close.

The lift is such an important part of everyday life that if problems arise with a lift it can become a huge annoyance and cause disarray.

P Dahl has specialized in lift electronics and lift control units and strive to always produce products of high quality and durability - to fit in both everyday life and more exclusive settings.

We know the importance of having a system as foolproof and smooth as possible, a system easy to install and maintain.

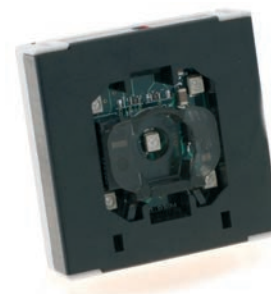
We also know the importance of having an aesthetic lift car or a lift car adapted to the environment it is installed in. P Dahl offers both solutions for more exclusive settings and for environments that require more durable solutions.

# Products

## Push buttons

### PB04

Part. No	PART	DESCRIPTION	QTY.
PB04-NBBM	PB04 Negative Blue Multi Connector		pcs
PB04-PBBM	PB04 Positive Blue Multiple Connector	PB04 ver. 2.0	pcs
PB04-PBBQ	PB04 Positive Blue Quick Connector	PB04 ver. 2.0	pcs
PB04-PBBS	PB04 Positive Blue Screw Connector	PB04 ver. 2.0	pcs
PB04-PRRM	PB04 Positive Red Multi Connector	PB04 ver. 2.0	pcs
PB04-PRRQ	PB04 Positive Red Quick Connector	PB04 ver. 2.0	pcs
PB04-PRRS	PB04 Positive Red Screw Connector	PB04 ver. 2.0	pcs
PB04-PWWM	PB04 Positive White Multiple Connector		pcs
PB04-PWWQ	PB04 Positive White Quick Connector		pcs
A00149761	Cable PB04 2M		pcs
A00149770	Cable PB04 5M		pcs
PB04-FC150	Flat cable PB04-FC150		pcs
PB04-FC250	Flat cable PB04-FC250		pcs
PB04-FC350	Flat cable PB04-FC350		pcs
PB04-FC550	Flat cable PB04-FC550		pcs



### S4-PB05

Part. No	PART	DESCRIPTION	QTY.
S4-PB05M-DB	S4-PB05M-DB (CAN Master)	Duallight	pcs
S4-PB05M-DR	S4-PB05M-DR	Duallight	pcs
S4-PB05M-DRB	S4-PB05M-DRB	Red center diode, Blue	pcs
S4-PB05M-DW	S4-PB05M-DW	Duallight	pcs
S4-PB05M-PB	S4-PB05M-PB	Panzer Blue	pcs
S4-PB05M-PR	S4-PB05M-PR	Panzer	pcs
S4-PB05M-RB	S4-PB05M-RB	Ring Blue	pcs
S4-PB05M-RR	S4-PB05M-RR	Ring	pcs
S4-PB05M-RW	S4-PB05M-RW	Ring White	pcs
S4-PB05S-DB	S4-PB05S-DB	Duallight Blue	pcs
S4-PB05S-DR	S4-PB05S-DR	Duallight Red	pcs
S4-PB05S-DRB	S4-PB05S-DRB	Red center diode, Blue	pcs
S4-PB05S-DW	S4-PB05S-DW	Duallight White	pcs
S4-PB05S-IR	S4-PB05S-IR	Indicator Red	pcs
S4-PB05S-PB	S4-PB05S-PB	Panzer Blue	pcs
S4-PB05S-PR	S4-PB05S-PR	Panzer Red	pcs
S4-PB05S-RB	S4-PB05S-RB	Ring Blue	pcs
S4-PB05S-RR	S4-PB05S-RR	Ring Red	pcs
S4-PB05S-RW	S4-PB05S-RW	Ring White	pcs
PB05-FC150	Flat cable PB05-FC 150mm		pcs
PB05-FC200	Flat cable PB05-FC for 200cc		pcs
PB05-FC45	Flat cable PB05-FC for 45cc		pcs
PB05-FC60	Flat cable PB05-FC 60mm		pcs
PB05-FC90	Flat cable 90cc for PB05-FC		pcs



**S4-PB06**

Part. No	PART	DESCRIPTION	QTY.
S4-PB06MC-BX	S4-PB06MC-BX	Master CAN Blue	pcs
S4-PB06MC-RX	S4-PB06MC-RX	Master CAN Red	pcs
S4-PB06MC-WX	S4-PB06MC-WX	Master CAN White	pcs
S4-PB06MD-BX	S4-PB06MD-BX	Master Differential	pcs
S4-PB06MD-RX	S4-PB06MD-RX	Differential Red	pcs
S4-PB06MD-WX	S4-PB06MD-WX	Master Differential	pcs
S4-PB06S-BX	S4-PB06S-BX	Slav Blue	pcs
S4-PB06S-RX	S4-PB06S-RX	Slav Red	pcs
S4-PB06S-WX	S4-PB06S-WX	Slav White	pcs
S3-CT	Can BUS terminating PCB	Terminering	pcs
S4-C2C01	S4-C2C01	CAN-2-CAN	pcs
S4-C2D01	S4-C2D01	CAN-2-Differential	pcs
S4-CAN01-D	S4-CAN01-D		pcs
S4-CAN01-S	S4-CAN01-S		pcs
A00132582	Contact body indicator Red		pcs
A00132608	Contact body indicator Green		pcs
A00157052	Contact body B7 Maxi White, 2 kontakter		pcs
A00151678	Contact body Blue 60V 2NO/1NC		pcs
A00147585	Contact body Red 60V 2NO/1NC		pcs
A00132671	Contact body BF Blue		pcs
A00132662	Contact body BF Red		pcs
A00132564	Contact body DL Blue/Blue		pcs
A00131832	Contact body nödsignal 12V	BDSVF42MR.MK 12V	pcs
A00132573	Contact body DL Red/Red		pcs
A00131823	Contact body, Emergency signal, 24V	24Volt, Amber, 2DF,	pcs
A00130655	Pip-kort PCB0.BEEP		pcs
A00132653	Contact body BF 1NC/NO, 1NO		pcs



**S4-PB05M-IORC**

Part. No	PART	DESCRIPTION	QTY.
S4-PB05M-IORC	PB05M-IORC receiver	Receiver	pcs
A00172588	RFID-tag Black PDAHL	drop(fender)	pcs
A00172596	RFID-tag Red PDAHL	drop(fender)	pcs
IRRC01	remote control IRRC01	sändare	pcs
A00130664	Indicator BF Blank		pcs
A00130780	Indicator BF "Optaget"		pcs
A00157412	Indicator BF "Buiten Dienst"		pcs
A00167028	Indicator BF "Present"		pcs
A00167940	Indicator Arrow 67x67mm White	LED	pcs
A00160436	Indicator BF "No Entry" Symbol	For EN81-73 Enkelrik-	pcs
A00141705	Indicator BF "Here"		pcs
A00158236	Indicator BF "LIFT OFF"		pcs
A00130806	Indicator BF "Tal"	For pictogram	pcs
A00130771	Indicator BF "Opptatt"		pcs
A00130762	Indicator BF "Her"		pcs
A00130753	Indicator BF "Här"		pcs
A00130673	Indicator BF "Överlast"		pcs
A00130682	Indicator BF "I Brug"		pcs

A00130691	Indicator BF "Stå ej i..."		pcs
A00130708	Indicator BF "No Entry" Text	text	pcs
A00130717	Indicator BF "Avstängd"		pcs
A00130726	Indicator BF "Arrow"		pcs
A00130735	Indicator BF "Upptaget"		pcs
A00130744	Indicator BF "Telefon"		pcs
A00130799	Indicator BF "Nöd"	For pictogram	pcs
A00132617	Contact body indicator Yellow		pcs
A00132608	Contact body indicator Green		pcs
A00130851	Key switch återfjädd. blue	Digisign	pcs
A00160372	KABA Key switch		pcs
A00130842	BF Keyswitch	Reset incl. key	pcs
A00130968	NS-3 Key switch		pcs
A00130959	NS-2 Key switch		pcs
A00130940	NS-1 Key switch		pcs
A00164540	Key switch bi-stable. White	Digisign	pcs
A00167316	Key switch bi-stable. Green	Digisign	pcs
A00156092	Key switch återfjädd. White	Digisign	pcs
A00130931	Key switch bi-stable Red CAN	Digisign	pcs
A00130922	Key switch bi-stable Blue CAN	Digisign	pcs
A00130913	Key switch återfjädd. Red CAN	Digisign	pcs
A00130904	Key switch återfjädd. Blue CAN	Digisign	pcs
A00130897	Key switch bi-stable Red	Digisign	pcs
A00130879	Key switch bi-stable blue	Digisign	pcs
A00130860	Key switch återfjädd. Red	Digisign	pcs
A00160380	KABA Keyswitch		pcs
A00158524	ASSA "A" Key		pcs
A00157764	Spare key for till Rittal lock 2576		pcs
A00161044	Fire key wedge		pcs
A00165724	Standard key for Rittal		pcs
A00147763	Key DMG 3231	Spare key, key breaker	pcs

## Cables

Part. No	PART	DESCRIPTION	QTY.
A00103461	RK 0,75 Bobin 500 m Black		m
A00103470	RK 0,75 Bobin 500 m Red		m
A00103489	RK 0,75 Bobin 500 m Gray		m
A00103498	RK 0,75 Bobin 500 m Blue		m
A00103505	RK 0,75 Bobin 500 m Dark blue		m
A00103514	RK 0,75 Bobin 500m Transparant		m
A00103523	RK 0,75 Bobin 500 m Orange		m
A00103532	RK 0,75 Bobin 500 m Violet		m
A00103541	RK 0,75 Bobin 500 m White		m
A00103550	RK 0,75 Bobin 500 m Brown		m
A00103569	RK 0,75 Bobin 500 m Yellow		m
A00103578	RK 0,75 Bobin 500 m Green		m
A00103587	RK 0,75 Bobin 500 m Yellow / Green		m
A00103596	RK 0,75 Bobin 500 m White / Green		m
A00103603	RK 0,75 Bobin 500 m Black/White		m

A00103612	RK 0,74 Bobin 500 m White / Red	m
A00103621	RK 0,75 Bobin 500 m White/Orange	m
A00103630	RK 0,75 Bobin 500m Black H-Fri	m
A00103649	RK 0,75 Bobin 500m Red H-fri	m
A00103658	RK 0,75 Bobin 500m Grey H-fri	m
A00103667	RK 0,75 Bobin 500m Blue H-fri	m
A00103676	RK 0,75 Bobin 500m Transparant H-fri	m
A00103685	RK 0,75 Bobin 500m Orange Hfri	m
A00103694	RK 0,75 Bobin 500m Violet H-f	m
A00103701	RK 0,75 Bobin 500m White H-fri	m
A00103710	RK 0,75 Bobin 500m Brown H-fri	m
A00103729	RK 0,75 Bobin 500m Yellow H-fri	m
A00103738	RK 0,75 Bobin 500m Green H-fri	m
A00103747	RK 0,75 Bobin 500m Yellow/Green Hf	m
A00103756	RK 0,75 500m White/Green H-fri	m
A00103970	RK 1,5 Bobin 500m Black H-fri	m
A00103989	RK 1,5 Bobin 500m Brown H-fri	m
A00103998	RK 1,5 Bobin 500m White H-fri	m
A00104004	RK 1,5 Bobin 500m Red H-fri	m
A00104013	RK 1,5 Bobin 500m Yellow/Green H-f	m
A00104031	RK 1,5 Bobin 500 m Black	m
A00104059	RK 1,5 Bobin 500 m Brown	m
A00104068	RK 1,5 Bobin 500 m White	m
A00104077	RK 1,5 Bobin 500 m Red	m
A00104086	RK 1,5 Bobin 500 m Yellow / Green	m
A00104139	RK 2,5 Bobin 100 m Black	m
A00104148	RK 2,5 Bobin 100 m Yellow/Green	m
A00104157	RK 2,5 Bobin 100 m Blue	m
A00104166	RK 2,5 Bobin 100 m Black H-fri	m
A00104175	RK 2,5 Bobin 100 m Yellow/Green H-f	m
A00104184	RK 2,5 Bobin 100 m Blue H-fri	m
A00104219	RK 4 Bobin 100 m Black	m
A00104228	RK 4 Bobin 100 m Yellow / Green	m
A00104237	RK 4 Bobin 100 m Blue	m
A00104246	RK 4 Bobin 100 m Black H-fri	m
A00104282	RK 6 Bobin 100 m Black	m
A00104291	RK 6 Bobin 100 m Yellow / Green	m
A00104308	RK 6 Bobin 100 m Blue	m
A00104317	RK 6 Bobin 100 m Red	m
A00104326	RK 6 Bobin 100 m Black H-fri	m
A00104353	RK 10 Bobin 100 m Black	m
A00104362	RK 10 Bobin 100 m Yellow / Green	m
A00104371	RK 10 Bobin 100 m Blue	m
A00104380	RK 16 Bobin 100 m Black H-fri	m
A00104424	RK 16 Bobin 100 m Black	m
A00104433	RK 16 Bobin 100 m Yellow / Green	m
A00104451	RK 16 Bobin 100 m Blue	m
A00104997	Rheyflex 500 CH 4G4	m
A00105316	Flat cable 12x0.75	m
A00105325	Flat cable 18x0.75	m
A00105334	Flat cable 24x0.75	1km/reel m

A00105343	Flat cable 24x0.75 Halogenfri		m
A00105352	Flat cable 4x4 Skärmad		m
A00105361	Flat cable 7x2,5	Flat 7G2,5	m
A00105389	Lift cable 24x1 st.support.st.		m
A00108340	Flatcable suspension		pcs
A00168900	Flat cable 18x0.75 Halogenfri		m
A00173332	Flat cable 12x0.75 Halogenfri		m
A00105398	Rundcable 24G1	24x1	m
A00108117	Korgkabelfäste rundkabel		pcs
A00157156	Rund 24x1 halogenfri	24x1 Halogenfri	m
A00104639	Rheyflex 500 Y 3G0,75		m
A00104648	Rheyflex 500 Y 5G0,75		m
A00104657	Rheyflex 500 Y 5x0,75 100 m		pcs
A00104675	Rheyflex 500 Y 7G0,75		m
A00104684	Rheyflex 500 Y 10G0,75		m
A00104693	Rheyflex 500 Y 12G0,75		m
A00104700	Rheyflex 500 Y 18G0,75		m
A00104719	Rheyflex 500 Y 25x0,75		m
A00104728	Rheyflex 500 Y 3G1,5		m
A00104737	Rheyflex 500 Y 3x1,5 100 m		pcs
A00104746	Rheyflex 500 Y 5G1,5		m
A00104755	Rheyflex 500 Y 7G1,5		m
A00104826	EKK Light 3G1,5 (50m/ring)		m
A00104835	Rheyflex 500 H 3G0,75		m
A00104844	Rheyflex 500 XH 5G0,75		m
A00104853	Rheyflex 500 H 7x1,5		m
A00104862	Rheyflex 500 XH 7G0,75		m
A00104871	Rheyflex 500 H 12G0,75		m
A00104880	Rheyflex 500 H 18G0,75		m
A00104899	Rheyflex 500 H 25G0,75		m
A00104906	Rheyflex 500 H 3G1,5		m
A00104915	Rheyflex 500 H 5G1,5		m
A00165916	Cable QWPK 3GX1.5 Halogenfri	Hang cable	m
A00171620	Cable QWPK 4GX1,5 Halogenfri	Hang cable	m
A00104513	Rheyflex 500 YCY 4G2,5		m
A00104522	Rheyflex 500 YCY 4G4		m
A00104531	Rheyflex 500 YCY 4G6		m
A00104540	Rheyflex 500 YCY 4G10		m
A00104559	Rheyflex 500 YCY 4G16		m
A00104568	Rheyflex 500 YCY 4G25		m
A00104577	Rheyflex 500 Y 4G2,5		m
A00104586	Rheyflex 500 Y 4G4		m
A00104595	Rheyflex 500 Y 4G6		m
A00104602	Rheyflex 500 Y 4G10		m
A00104611	Rheyflex 500 Y 4G16		m
A00104620	Rheyflex 500 Y 4G25		m
A00104933	Rheyflex 500 H 4G2,5		m
A00104942	Rheyflex 500 H 4G4		m
A00104951	Rheyflex 500 H 4G6		m
A00104960	Rheyflex 500 H 4G10		m
A00104979	Rheyflex 500 H 4G16		m



A00104988	Rheyflex 500 CH 4G2,5		m
A00105003	Rheyflex 500 CH 4G6		m
A00105012	Rheyflex 500 CH 4G10		m
A00105021	Rheyflex 500 CH 4G16		m
A00105227	Skärmstrumpa FCK 12.5		m
A00105352	Flat cable 4x4 Skärmad		m
A00103452	Stigare EKK 5G2,5 500V F3 Blyf		m
A00104764	Stigare DK-N07VV-R 5G4 Blyfri		m
A00104773	Stigare 5G6 MMJ		m
A00104782	Stigare 5G10 MMJ		m
A00104791	Stigare 5G16 MMJ		m
A00104808	Stigare 5G25 MMJ		m
A00104817	Stigare DK-N07VV-R 5G25 Blyfri		m
A00105432	Data cabel 9F-9F Nollmodem	EDW 100	pcs
A00105441	Data cable 9M/9F Pin2Pin 1.8m		pcs
A00105469	Data cable 9F/25M Modem cable		pcs
A00106502	Vp 25 rör 72m/frp		m
A00106511	VP skarvrör 25 mm		pcs
A00106717	Cable duct 100 mm MP-823 S		pcs
A00106726	Cable duct 150mm MP-824 S		pcs
A00108153	Kanalclips ZP2		pcs
A00108340	Flatcable suspension		pcs

## Car top Control Boxes

Part. No	PART	DESCRIPTION	QTY.
A00146068	Car top box SE 0IO 0DK 2VU		pcs
A00146077	Car top box ENG 0IO 0DK 1VU		pcs
A00146086	Car top box DK/SE 0IO 0DK 1VU		pcs
A00146102	Car top box SE 1IO 0DK 2VU		pcs
A00146120	Car top box ENG 1IO 0DK 1VU		pcs
A00106397	Buzzer 1-16V for car top box	Car top box	pcs
A00106815	Wall socket panelmontage Schuko		pcs
A00106824	Wall socket panelmontage B/F		pcs
A00106833	Wall socket panelmontage DK		pcs
A00106842	Wall socket panelmontage GB		pcs
A00109330	Lid car top box CTC01		pcs
A00132760	Emergency stop EN81 for car top box		pcs
A00132788	DTO NC Kontakt for car top box		pcs
A00132831	Inspektionsvred for car top box		pcs
A00132840	Arrow Up/Down for car top box		pcs
A00132859	Button Alarm/< > for car top box		pcs
A00132877	Nödsignalsknapp for car top box	Car top box	pcs
A00132911	NO Kontakt 03/04 for car top box		pcs
A00132948	NC Kontakt 01/02 for car top box		pcs
A00132975	2-vånings clip for car top box		pcs
A00132993	Aniot rotation ring for car top box		pcs
A00164764	Buzzer 1-28V for car top box	Car top box	pcs
A00169260	Yellow ring for inspection, car top box		pcs
A00164876	Wall socket panel mount Schuko screw		pcs

## Control Units

### AE03

Part. No	PART	DESCRIPTION	QTY.
AE03-A	AE03-A	Dead mans grip Sweden	pcs
AE03-B	AE03-B	Dead mans grip Norway	pcs
AE03-C	AE03-C		pcs
A00143203	Terminals AE03-A		pcs
A00143212	Terminals AE03-B		pcs
A00156380	Terminals AE03-C		pcs

### S3

Part. No	PART	DESCRIPTION	QTY.
S3-42C2SI0-P	S3-42C2SI0-P		pcs
S3-45A0SI1-P	S3-45A0SI1-P		pcs
S3-45A2SI0-P	S3-45A2SI0-P		pcs
S3-45A2SP0-P	S3-45A2SP0-P		pcs
S3-45A3SP0-P	S3-45A3SP0-P		pcs
S3-45B0SI3-P	S3-45B2SP0-P		pcs
S3-45B2SP0-P	S3-45B2SP0-P		pcs
S3-45C0SI0-N	S3-45C0SI0-N		pcs
S3-45C0SI1-N	S3-45C0SI1-N		pcs
S3-45C0SI1-P	S3-45C0SI1-P		pcs
S3-45C0SI3-N	S3-45C0SI3-N		pcs
S3-45C0SI3-P	S3-45C0SI3-P		pcs
S3-45C0SP1-P	S3-45C0SP1-P		pcs
S3-45C2SI0-N	S3-45C2SI0-N		pcs
S3-45C2SI0-P	S3-45C2SI0-P		pcs
S3-45C2SI1-N	S3-45C2SI1-N		pcs
S3-45C2SI1-P	S3-45C2SI1-P		pcs
S3-45C2SI2-N	S3-45C2SI2-N		pcs
S3-45C2SI3-N	S3-45C2SI3-N		pcs
S3-45C2SI3-P	S3-45C2SI3-P		pcs
S3-45C2SP0-N	S3-45C2SP0-N		pcs
S3-45C2SP0-P	S3-45C2SP0-P		pcs
S3-45C2SP1-P	S3-45C2SP1-P		pcs
S3-45C3SI0-N	S3-45C3SI0-N		pcs
S3-45C3SI0-P	S3-45C3SI0-P		pcs
S3-45C3SI1-P	S3-45C3SI1-P		pcs
S3-45C3SI2-N	S3-45C3SI2-N		pcs
S3-45C3SI2-P	S3-45C3SI2-P		pcs
S3-45C3SI3-N	S3-45C3SI3-N		pcs
S3-45C3SI3-P	S3-45C3SI3-P		pcs
S3-45C3SP0-N	S3-45C3SP0-N		pcs
S3-45C3SP0-P	S3-45C3SP0-P		pcs
S3-45C3SP1-P	S3-45C3SP1-P		pcs
S3-45C3SP2-P	S3-45C3SP2-P		pcs
S3-45C6SI0-N	S3-45C6SI0-N		pcs
S3-45C6SI0-P	S3-45C6SI0-P		pcs
S3-45C6SI1-P	S3-45C6SI1-P		pcs

S3-45C6SI2-P	S3-45C6SI2-P	pcs
S3-45C6SI3-P	S3-45C6SI3-P	pcs
S3-45C6SP0-P	S3-45C6SP0-P	pcs
S3-45C6SP2-P	S3-45C6SP2-P	pcs
S3-45D0SI1-N	S3-45D0SI1-N	pcs
S3-45D0SI1-P	S3-45D0SI1-P	pcs
S3-45D0SI3-P	S3-45D0SI3-P	pcs
S3-45D0SP1-P	S3-45D0SP1-P	pcs
S3-45D2SI0-P	S3-45D2SI0-P	pcs
S3-45D2SI1-N	S3-45D2SI1-N	pcs
S3-45D2SI1-P	S3-45D2SI1-P	pcs
S3-45D2SI3-P	S3-45D2SI3-P	pcs
S3-45D2SP0-P	S3-45D2SP0-P	pcs
S3-45D2SP1-P	S3-45D2SP1-P	pcs
S3-45D2SP2-P	S3-45D2SP2-P	pcs
S3-45D2SP3-P	S3-45D2SP3-P	pcs
S3-45D3SI0-N	S3-45D3SI0-N	pcs
S3-45D3SI0-P	S3-45D3SI0-P	pcs
S3-45D3SI1-N	S3-45D3SI1-N	pcs
S3-45D3SI1-P	S3-45D3SI1-P	pcs
S3-45D3SI2-P	S3-45D3SI2-P	pcs
S3-45D3SI3-N	S3-45D3SI3-N	pcs
S3-45D3SI3-P	S3-45D3SI3-P	pcs
S3-45D3SP0-P	S3-45D3SP0-P	pcs
S3-45D3SP1-P	S3-45D3SP1-P	pcs
S3-45D3SP2-P	S3-45D3SP2-P	pcs
S3-45D3SP3-P	S3-45D3SP3-P	pcs
S3-45D6SI0-N	S3-45D6SI0-N	pcs
S3-45D6SI0-P	S3-45D6SI0-P	pcs
S3-45D6SI1-P	S3-45D6SI1-P	pcs
S3-45D6SI2-P	S3-45D6SI2-P	pcs
S3-45D6SI3-P	S3-45D6SI3-P	pcs
S3-45D6SP0-P	S3-45D6SP0-P	pcs
S3-45D6SP2-P	S3-45D6SP2-P	pcs
A00118508	Display 128x128 LED belyst	pcs
A00124939	S3-Front PD Swe	pcs
A00124957	S3-front English / German	pcs
A00154308	Terminals S3-2_C0S_1	pcs
A00154317	Terminals S3-2_C0S_3	pcs
A00154326	Terminals S3-2_C2S_0	pcs
A00154335	Terminals S3-2_C2S_1	pcs
A00154344	Terminals S3-2_C2S_2	pcs
A00154353	Terminals S3-2_C2S_3	pcs
A00154362	Terminals S3-2_C3S_0	pcs
A00154371	Terminals S3-2_C3S_1	pcs
A00154380	Terminals S3-2_C3S_2	pcs
A00154399	Terminals S3-2_C3S_3	pcs
A00154406	Terminals S3-4_C0S_1	pcs
A00154415	Terminals S3-4_C0S_3	pcs
A00154424	Terminals S3-4_C2S_0	pcs
A00154451	Terminals S3-4_C2S_2	pcs

A00154460 Terminals S3-4\_C2S\_3

pcs

## Electrical Packages

Part. No	PART	DESCRIPTION	QTY.
A00102846	Vibration dampeners M4		pcs
A00145934	Cabinet light & Strip light		pcs
A00106799	2 Poligt wall socket		pcs
A00156836	Wall socket rail mounting DK	Danish	pcs
A00114208	Wall socket grounded rail mounting		pcs
A00165036	Wall socket AUS for DIN mont		pcs
A00169356	Contactor LC1D32E7	48VAC	pcs
A00165868	Contactor LC1D32E7	48VAC	pcs
A00162084	Contactor LC1D80ED	48VDC	pcs
A00110622	Contactor LC1D150P7	230VAC	pcs
A00110613	Contactor LC1D115P7	250VAC	pcs
A00110604	Contactor LC1D95P7	230VAC	pcs
A00110588	Contactor LC1D80P7	230VAC	pcs
A00110560	Contactor LC1D65P7	250VAC	pcs
A00110542	Contactor LC1D50P7	250VAC	pcs
A00110524	Contactor LC1D40P7	230VAC	pcs
A00110506	Contactor LC1D38P7	230VAC	pcs
A00110499	Contactor LC1D32P7	230VAC	pcs
A00110480	Contactor LC1D25P7	230VAC	pcs
A00110462	Contactor LC1D18P7	230VAC	pcs
A00110435	Contactor LC1D09P7	230VAC	pcs
A00110426	Contactor LC1-D0901M7		pcs
A00143605	Contactor LC1D65008P7	230VAC	pcs
A00151392	Contactor LC1D32ND	60VDC	pcs
A00145023	Contactor LC1D38ND	60VDC	pcs
A00167964	Contactor LC1D09P7	120VAC	pcs
A00152971	Contactor LC1D09E7	48VAC	pcs
A00143632	Contactor LC1D128UD	250VDC	pcs
A00143623	Contactor LC1D128P7	230VAC	pcs
A00164364	Contactor LC1D32FD	110VDC	pcs
A00162236	Contactor LC1D09BD	24VDC	pcs
A00157780	Contactor LC1D09UD	250VDC	pcs
A00158876	Contactor LC1D18E7	48VAC	pcs
A00159444	Contactor LC1D40F7	110VAC	pcs
A00159924	Contactor LC1D12P7	230VAC	pcs
A00162060	Contactor LC1D09ED	48VDC	pcs
A00162068	Contactor LC1D25ED	48VDC	pcs
A00162076	Contactor LC1D40ED	48VDC	pcs
A00164228	Contactor LC1D65008P7	230VAC	pcs
A00143614	Contactor LC1D80008P7	230VAC	pcs
A00110417	Contactor LC1D150F7	110VAC	pcs
A00110408	Contactor LC1D115F7	110VAC	pcs
A00110355	Contactor LC1D38F7	110VAC	pcs
A00110131	Contactor LC1D18UD	250VDC	pcs
A00110248	Contactor LC1D25ND	60VDC	pcs

A00110239	Contactora LC1D18ND	60VDC	pcs
A00110220	Contactora LC1D12ND	60VDC	pcs
A00110211	Contactora LC1D09ND	60VDC	pcs
A00110195	Contactora LC1D258P7	230VAC	pcs
A00110186	Contactora LC1D258UD	250VDC	pcs
A00110177	Contactora LC1D50UD	250VDC	pcs
A00110168	Contactora LC1D38UD	250VDC	pcs
A00110159	Contactora LC1D32UD	250VDC	pcs
A00110140	Contactora LC1D25UD	250VDC	pcs
A00110122	Contactora LC1D12UD	250VDC	pcs
A00110097	Contactora LC1D09B7	24VAC	pcs
A00110024	Contactora CAD32P7	230VAC	pcs
A00110257	Contactora LC1D12FD	110VDC	pcs
A00110319	Contactora LC1D09F7	110VAC	pcs
A00110346	Contactora LC1D32F7	110VAC	pcs
A00110328	Contactora LC1D18F7	110VAC	pcs
A00110364	Contactora LC1D50F7	110VAC	pcs
A00110373	Contactora LC1D65F7	110VAC	pcs
A00110300	Contactora CAD32F7	110VAC	pcs
A00110293	Contactora LC1D38FD	110VDC	pcs
A00110382	Contactora LC1D80F7	110VAC	pcs
A00110266	Contactora LC1D18FD	110VDC	pcs
A00110284	Contactora LC1D32FD	110VDC	pcs
A00110275	Contactora LC1D25FD	110VDC	pcs
A00110391	Contactora LC1D95F7	110VAC	pcs
A00110337	Contactora LC1D25F7	110VAC	pcs
A00112184	Motor protection GV2-P21	17-23A	pcs
A00112175	Motor protection GV2-P20	13-18A	pcs
A00112166	Motor protection GV2-P16	9-14A	pcs
A00112157	Motor protection GV2-P14	6-10A	pcs
A00112148	Motor protection GV2-P10	4-6,3A	pcs
A00112139	Motor protection GV3ME80	56-80A	pcs
A00112102	Motor protection GV3ME63	40-63A	pcs
A00112068	Motor protection GV2ME32	24-32A	pcs
A00112040	Motor protection GV2ME22	20-25A	pcs
A00112193	Motor protection GV2-P22	20-25A	pcs
A00112200	Door connector GV2AP01		pcs
A00109974	Auxiliary contact block LADN22		pcs
A00109983	Auxiliary contact block LADN31		pcs
A00110042	Relay supressor LA4-DA2U		pcs
A00110051	Relay supressor LAD4-RCU		pcs
A00110659	Motor protection LR2-D1303	0,25-0,40A	pcs
A00110891	Motor protection LR2-D3361	55-70A	pcs
A00110748	Motor protection LR2-D1314	7-10A	pcs
A00112086	Motor protection GV3ME40	25-40A	pcs
A00112022	Motor protection GV2ME21	17-23A	pcs
A00112004	Motor protection GV2ME20	13-18A	pcs
A00110793	Motor protection LRD21	12-18A	pcs
A00110784	Motor protection LR2-D1321	12-18A	pcs
A00110060	Overcurrent relay LAD7B106		pcs
A00110668	Motor protection LR2-D1305	0,63-1A	pcs

A00110088	Relay interface LA4-DFB		pcs
A00110766	Motor protection LR2-D1316	9-13A	pcs
A00110775	Motor protection LRD16	9-13A	pcs
A00110757	Motor protection LRD14	7-10A	pcs
A00110079	Overcurrent relay LA7-D3064		pcs
A00110720	Motor protection LRD10	4-6A	pcs
A00110711	Motor protection LRD08	2,5-4A	pcs
A00110702	Motor protection LRD07	1,6-2,5A	pcs
A00110695	Motor protection LRD06	1,0-1,7A	pcs
A00110739	Motor protection LRD12	5,5-8A	pcs
A00110677	Motor protection LR2-D1306	1-1,63A	pcs
A00110800	Motor protection LR2-D1322	17-25A	pcs
A00110819	Motor protection LRD22	16-24A	pcs
A00110971	Motor protection GV2ME16	9-14A	pcs
A00110962	Motor protection GV2-M16	9-14A	pcs
A00110953	Motor protection GV2ME14	6-10A	pcs
A00110944	Motor protection GV2-M14	6-10A	pcs
A00110935	Motor protection GV2-M10	4-6A	pcs
A00110926	Motor protection GV2ME08	2.5-4A	pcs
A00110917	Motor protection GV2ME05	0.63-1A	pcs
A00110640	Motor protection LR2-D1302	0,16-0,25A	pcs
A00110882	Motor protection LR2-D3357	37-57A	pcs
A00110873	Motor protection LR2-D3355	30-40A	pcs
A00110864	Motor protection LR2-D3353	23-32A	pcs
A00110855	Motor protection LR2-D3322	17-25A	pcs
A00110846	Motor protection LRD 3359	48-65A	pcs
A00110837	Motor protection LRD35	30-38A	pcs
A00110828	Motor protection LRD32	23-32A	pcs
A00110686	Motor protection LRD05	0,63-1,0A	pcs
A00112442	Relay MT323024		pcs
A00112764	Relay RT424615 2-pol 115VAC 8A -h		pcs
A00112755	Relay RT424548 2-pol 48VAC 8A -h		pcs
A00112746	Relay RT424730 2-pol 230VAC 8A -h		pcs
A00112728	Relay RT 230V 2-pol 8A		pcs
A00112719	Relay RT424024 2-pol 24VDC 8A -h		pcs
A00112700	Relay RT424012 2-pol 12VDC 8A -h		pcs
A00112693	Relay RT314024 1-pol 24VDC 16A -h		pcs
A00112460	Relay socket 11-pol MT78740		pcs
A00112451	Relay MT328230		pcs
A00112380	Time relay RE6TA11MW		pcs
A00112371	D6DM Time relay		pcs
A00112399	Time relay RE6TA31MW		pcs
A00112773	Relay RT424005 2-pol 5VDC 8A -h		pcs
A00156884	Automatic fuse C60H 1P C2A		pcs
A00162188	Automatic fuse C60N 3P C20A		pcs
A00145729	Automatic fuse C60N 4P C32A		pcs
A00145710	Automatic fuse C60N 3P C10A		pcs
A00145701	Automatic fuse C60N 2P B20A		pcs
A00145694	Automatic fuse C60N 1P B16A		pcs
A00144033	Automatic fuse C60N 2P C10A		pcs
A00144024	Automatic fuse C60N 3P C6A		pcs

A00159468	Automatic fuse C60N 2P C16A		pcs
A00113316	Automatic fuse C60H 4P D50A		pcs
A00161348	Automatic fuse C60N 1P C2A		pcs
A00159932	Automatic fuse C60N 2P C4A		pcs
A00156892	Automatic fuse C60H 1P B10		pcs
A00158436	Automatic fuse C60H 1P C4A		pcs
A00158444	Automatic fuse C60H 1P C10		pcs
A00159076	Automatic fuse C60N 3P C20A		pcs
A00159084	Automatic fuse C60N 4P B6A		pcs
A00159092	Automatic fuse C60L 2P C25A		pcs
A00159100	Automatic fuse C60N 3P C25A		pcs
A00159396	Automatic fuse C60N 4P C10A		pcs
A00159476	Automatic fuse C60N 2P C20A		pcs
A00113307	Automatic fuse C60H 4P D40A		pcs
A00113290	Automatic fuse C60H 4P D25A		pcs
A00113281	Automatic fuse C60H 4P B6A		pcs
A00113192	Automatic fuse C32A		pcs
A00113183	Automatic fuse C60N 3P C16A		pcs
A00113174	Automatic fuse C16A		pcs
A00113129	Automatic fuse C60N 1P C4A		pcs
A00113110	Automatic fuse C60N 2P C2A		pcs
A00113101	Automatic fuse C60N 1P C2A		pcs
A00113094	Automatic fuse C60H 1P C1A		pcs
A00113085	Automatic fuse C60N 1P C0,5A		pcs
A00113076	Automatic fuse C60N 1P B10A		pcs
A00113147	Automatic fuse C60N 2P C6A		pcs
A00113156	Automatic fuse C60N 1P C6A		pcs
A00113272	Automatic fuse C60H 2P B10A		pcs
A00113263	Automatic fuse C60N 2P B10A		pcs
A00113254	Automatic fuse C60H 2P B6A		pcs
A00113245	Automatic fuse C60H 2P C4A		pcs
A00113236	Automatic fuse C60H 2P C2A		pcs
A00113227	Automatic fuse C60H 3P C6A		pcs
A00113218	Automatic fuse C60N 3P B10A		pcs
A00113209	Automatic fuse C60N 3P B6A		pcs
A00113165	Automatic fuse C60N 1P C10A		pcs
A00113067	Automatic fuse C60N 1P B6A		pcs
A00110640	Motor protection LR2-D1302	0,16-0,25A	pcs
A00162204	Motor protection GV2ME07	1,6-2,7A	pcs
A00161860	Motor protection GV2ME06	1-1,6A	pcs
A00159492	Motor protection GV2ME10	4-6.3A	pcs
A00142393	Motor protection GV3P65	48-65A	pcs
A00142384	Motor protection GV3P50	37-50A	pcs
A00142375	Motor protection GV3P40	30-40A	pcs
A00112193	Motor protection GV2-P22	20-25A	pcs
A00112184	Motor protection GV2-P21	17-23A	pcs
A00112175	Motor protection GV2-P20	13-18A	pcs
A00112166	Motor protection GV2-P16	9-14A	pcs
A00112157	Motor protection GV2-P14	6-10A	pcs
A00112139	Motor protection GV3ME80	56-80A	pcs
A00112102	Motor protection GV3ME63	40-63A	pcs

A00112095	Motor protection GV3-M63	40-63A	pcs
A00112022	Motor protection GV2ME21	17-23A	pcs
A00112004	Motor protection GV2ME20	13-18A	pcs
A00164668	Motor protection GV2ME04	0.4-0,63A	pcs
A00166660	Motor protection LRD05	0,40-0,63A	pcs
A00110837	Motor protection LRD35	30-38A	pcs
A00110659	Motor protection LR2-D1303	0,25-0,40A	pcs
A00110668	Motor protection LR2-D1305	0,63-1A	pcs
A00110677	Motor protection LR2-D1306	1-1,63A	pcs
A00110686	Motor protection LRD05	0,63-1,0A	pcs
A00110695	Motor protection LRD06	1,0-1,7A	pcs
A00110702	Motor protection LRD07	1,6-2,5A	pcs
A00110711	Motor protection LRD08	2,5-4A	pcs
A00110720	Motor protection LRD10	4-6A	pcs
A00110739	Motor protection LRD12	5,5-8A	pcs
A00110748	Motor protection LR2-D1314	7-10A	pcs
A00110757	Motor protection LRD14	7-10A	pcs
A00110766	Motor protection LR2-D1316	9-13A	pcs
A00110775	Motor protection LRD16	9-13A	pcs
A00110784	Motor protection LR2-D1321	12-18A	pcs
A00110793	Motor protection LRD21	12-18A	pcs
A00110800	Motor protection LR2-D1322	17-25A	pcs
A00110971	Motor protection GV2ME16	9-14A	pcs
A00147450	Softstarter ATS01N206QN	400V 1,1/2,2kW 6A	pcs
A00171708	Softstarter ATS48D38Q 230/400V	Softstarter 230/400V 9/18,5kW	pcs
A00171700	Softstarter ATS48D32Q 230/400V	Softstarter 230/400V 7,5/15kW	pcs
A00171692	Softstarter ATS48D22Q 230/400V	Softstarter 230/400V 5,5/11kW	pcs
A00165084	Softstarter ATS48D62Q	15kW, 400V/32A, 230V/62A	pcs
A00171684	Softstarter ATS48D17Q 230/400V	Softstarter 230/400V 4/7,5kW	pcs
A00161340	Softstarter ATS01N222LU		pcs
A00161332	Softstarter ATS01N112FT		pcs
A00152962	Softstarter ATS01N272Q	400V 30-37kW 72A 180x242mm	pcs
A00147521	Softstarter ATS01N285Q	400V 45kW 85A 180x242mm	pcs
A00147512	Softstarter ATS01N244Q	400V 22kW 44A 180x132mm	pcs
A00147503	Softstarter ATS01N232QN	400V 15kW 32A	pcs
A00147496	Softstarter ATS01N222QN	400V 7,5/11kW 22A	pcs
A00147487	Softstarter ATS01N212QN	400V 5,5kW 12A	pcs
A00147469	Softstarter ATS01N209QN	400V 3/4kW 9A	pcs
A00171716	Softstarter ATS48D47Q 230/400V	Softstarter 230/400V 11/22kW	pcs
A00145336	Power supply 2,1A Omron		pcs
A00145345	Power supply 4,5A Omron		pcs
A00145354	Power supply 6,5A Omron		pcs

## LA5

Part. No	PART	DESCRIPTION	QTY.
LA5-12VBR	Emergency Power Supply LA5-12VBR	Med bygel	pcs
LA5-12VL	Stand by unit LA5-12VL		pcs
LA5-24V	Stand by unit LA5-24V		pcs
LA5-24VBR	Stand by unit LA5-24VBR		pcs
A00109367	Angled bracket LA5-24V		pcs



A00109376	Angled bracket for LA5-12V		pcs
A00150053	Box for LA5		pcs
A00113905	Transformer 230/19-110-130	500VA	pcs
A00155548	Transformer 230/19-56-110	300VA	pcs
A00165828	Transformer 500//230-19	980 VA	pcs
A00166460	Transformer 230/24V 4A	120VA	pcs
A00162580	Transformer 230/230	500VA	pcs
A00113914	Transformer 230/400 Sx3	660VA	pcs
A00113898	Transformer 230/19-56-110	300VA	pcs
A00113843	Transformer 230/130-150-170V	360VA	pcs
A00113834	Transformer 230/0-48-56-70V	300VA	pcs
A00113825	Transformer 230//14/14	160VA	pcs
A00113816	Transformer P:230 S1:19V, 60 VA	60VA	pcs
A00145596	Transformer 230/30 4A	120VA	pcs
A00161884	Load breakers 50A 4-Pol wall mounted		pcs

### SL3000

Part. No	PART	DESCRIPTION	QTY.
A00134768	Safeline 3000 PSTN Mini	For mounting in cabinet	pcs
A00134802	Safeline 3000 GSM Mini	For mounting in cabinet	pcs
A00145676	Safeline 3000 PSTN STD	Not mounted (blue)	pcs
A00145685	Safeline 3000 GSM STD	Not mounted (blue)	pcs
A00108939	Jumper Safeline 3000/SL6 vertical	Bracket for v mounting	pcs
A00141732	Safeline mic Emerg. light for SL3000	SLRem_V3Led	pcs
A00145630	Safeline 3000 PSTN linjekort		pcs
A00156868	SafeLine mic surf mount for SL3000		pcs
A00159004	Safeline Flat cable RJ45 5m card conn.		pcs
A00160764	Safeline Comphone for intercom		pcs
A00170956	Bracket Safeline 3000/SL6 horizontal	Bracket for h mounting	pcs

### SL6

Part. No	PART	DESCRIPTION	QTY.
A00165428	Safeline SL6 PSTN (Line) STD	Not fitted (black)	pcs
A00165436	Safeline SL6 GSM STD	Not fitted (black)	pcs
A00169332	Safeline SL6 GSM Mini	For mounting in cabinet	pcs
A00169340	Safeline SL6 PSTN (Line) Mini	For mounting in cabinet	pcs
A00108939	Bygel Safeline 3000/SL6 vertical	Bracket for v mounting	pcs
A00141750	Safeline Extra Speech unit SL6	SLB-RD-But	pcs
A00141867	GSM-antenna with magnetic foot		pcs
A00145649	SL6 GSM-card		pcs
A00159004	Safeline Flat cable RJ45 5m card conn.		pcs
A00160764	Safeline Comphone for intercom		pcs
A00165444	SafeLine SL6 mic for pikto		pcs
A00166132	Safeline Mic Utp picto for SL6		pcs
A00170956	Bracket Safeline 3000/SL6 horizontal		pcs
A00165444	SafeLine SL6 mic for infällt pikto		pcs
A00166132	Safeline Mic Utp picto for SL6		pcs
A00141750	Safeline Extra Speech unit SL6	SLB-RD-But	pcs
A00141732	Safeline mic utp Emergency light for SL3000	SLRem_V3Led	pcs

A00156868	SafeLine mic surface mounted for SL3000	pcs
A00160764	Safeline Comphone for intercom	pcs
A00166412	Safeline Mic Utp w emergency light for SL6	pcs
A00159004	Safeline Flat cable RJ45 5m card connection	pcs

## Enclosures

Part. No	PART	DESCRIPTION	QTY.
A00172500	Cabinet1800x1200x400 DD		pcs
A00155444	Cabinet 1200x600x300	Wall cabinet 1200x600x300	pcs
A00155500	Cabinet 800x1200x300 RF	Wall cabinet 800x1200x300 RF	pcs
A00153274	Cabinet 1000x760x300 DD	Wall cabinet dubbeldörr	pcs
A00147307	Cabinet 1200x1000x300	Wall cabinet 1200x1000x300	pcs
A00147290	Cabinet1800x1000x400 DD		pcs
A00147281	Cabinet 2000x500x250 RF	Floor cabinet 2000x500x250 RF	pcs
A00141956	Cabinet 1000x600x250	Wall cabinet 1000x600x250	pcs
A00141938	Cabinet 2000x500x300	Floor cabinet 2000x500x300	pcs
A00155460	Cabinet 1000x1000x300 DD	Wall cabinet 1000x1000x300	pcs
A00160444	Cabinet 2000x500x300 RF	Floor cabinet 2000x500x300 RF	pcs
A00171628	Cabinet 1200x1000x300	Wall cabinet 1200x1000x300	pcs
A00169364	Cabinet 760x760x210	Wall cabinet 760x760x210	pcs
A00169324	Cabinet 1000x800x300 Double door	Wall cabinet SA 83361	pcs
A00164804	Cabinet 800x600x300 (horizontal)	Wall cabinet 800x600x300 horiz.	pcs
A00164412	Cabinet 1200x800x300	Wall cabinet	pcs
A00162356	Cabinet Rittal 600x800x300 (HxBxD)	Wall cabinet	pcs
A00162020	Cabinet 760x1000x210 DD	Wall cabinet 760x1000x210	pcs
A00161620	Cabinet 800x1000x300	Wall cabinet 800x1000x300	pcs
A00107403	Cabinet 2000x500x250	Floor cabinet 2000x500x250	pcs
A00107163	Cabinet 1000x800x300	Wall cabinet SA 83361	pcs
A00106931	Apparatlåda 300x250x200		pcs
A00107109	Cabinet 800x600x250	Wall cabinet 800x600x250	pcs
A00107145	Cabinet 800x800x300	Wall cabinet 800x800x300	pcs
A00107154	Cabinet 800x800x300 Dub.dö	Wall cabinet 800x800x300 DD	pcs
A00107172	Cabinet 1200x1000x300 DD	Wall cabinet 1200x1000x300	pcs
A00107289	Cabinet 760x760x300	Wall cabinet 760x760x300	pcs
A00107396	Cabinet 2000x400x200	Floor cabinet 2000x400x200	pcs
A00107412	Cabinet 2000x400x200 RF	Floor cabinet 2000x400x200 RF	pcs
A00155316	Cabinet 1800x800x400	Floor cabinet 1800x800x400	pcs
A00107421	Cabinet 2000x500x250 RF	Floor cabinet 2000x500x250 RF	pcs
A00107047	Filter fan 230VAC 230m3/h	255x255 mm	pcs
A00109054	Floor stand 1 par		par
A00167780	Schematics holder A4, Horizontal		pcs
A00107314	Rittal wall bracket angle 4/frp		pcs
A00155516	Rittal wall bracket angle 4/frp		pcs
A00113941	Filter 35m3/h	60x60 mm	pcs
A00107056	Filter 230 m3/h	255x255 mm	pcs
A00107065	Filter fam 230VAC 50 m3/h	148,5x148,5 mm	pcs
A00166500	Plate for cabinet 1000x1000x300 DD		pcs
A00107083	Filter 50 m3/h	148,5x148,5 mm	pcs
A00138648	Cabinet bracket Stativ		pcs

A00161940	Filter fan 230VAC 150m3/h	204x204 mm	pcs
A00107369	Schematics holder A4 (GRÅ)		pcs
A00107341	Handle for Assa cylinder Sarel	Ordered with A00156708	pcs
A00138639	Wall bracket (SAREL) kit		pcs
A00161828	Filter IP54 80x80	80x80 mm	pcs

## Encoder

### INC-MXXXX

Part. No	PART	DESCRIPTION	QTY.
A00138719	Encoder package Motor INC-MF47X	10-30 VDC	pcs
A00138728	Encoder package Motor INC-MM457	10-30VDC	pcs
A00138737	Encoder package Motor INC-MM477	10-30VDC	pcs
A00154193	Encoder package Motor INC-MM477 5VDC	5VDC	pcs
A00155556	Encoder package Motor INC-MF47X 5V	5VDC	pcs
A00155564	Encoder package Motor INC-MMX77	Package w/o encoder	pcs
A00157172	Encoder package Motor INC-MFX7X	Package w/o encoder	pcs
A00108788	Axelkoppling 10/10		pcs
A00108966	Wall bracket L=750, pulsgivare		pcs
A00108984	Wall bracket L=500mm		pcs
A00100866	PG nut M6 D10		pcs
A00100875	PG Bult M8 D10		pcs
A00100884	PG Bult M10 D10		pcs
A00100893	PG Bult M12 D10		pcs
A00100919	Motor encoder nut M14 D10		pcs
A00100928	PG Bult M16 D10		pcs
A00100937	PG Bult M20 D10		pcs
A00100866	PG nut M6 D10		pcs
A00100875	PG Bult M8 D10		pcs
A00100884	PG Bult M10 D10		pcs
A00100893	PG Bult M12 D10		pcs
A00100919	Motor encoder nut M14 D10		pcs
A00100928	PG Bult M16 D10		pcs
A00100937	PG Bult M20 D10		pcs

## Floor indicators

### DF03

Part. No	PART	DESCRIPTION	QTY.
DF03-BDBP	DF03 Binary/Decimal Blue		pcs
DF03-BDBN	DF03 Binary/Decimal Blue Neg		pcs
DF03-BDRN	DF03 Binary/Decimal Red Neg		pcs
DF03-BDRP	DF03 Binary/Decimal red		pcs
A00150740	Mounting kit DF03 Red		pcs
A00150759	Mounting kit DF03 blue		pcs
AS02-D	AS02 surface mounting DF03/DF04		pcs

**DF04**

Part. No	PART	DESCRIPTION	QTY.
DF04-CB	DF04-CB		pcs
DF04-CR	DF04 CAN BUS Floor ind		pcs
A00153041	Fitting kit DF04 Blue		pcs
A00153050	Mounting kit for DF04 Red		pcs
A00167580	Fitting kit DF04 Red - Låg CAN BUS		pcs
AS02-D	AS02 direct fit DF03/DF04		pcs

**Infoskärm**

Part. No	PART	DESCRIPTION	QTY.
A00174668	Info screen/ Floor indicator 7"		pcs
A00175764	Info screen/ Floor indicator 15"		pcs

**DF12**

Part. No	PART	DESCRIPTION	QTY.
S4-DF12-CB0	S4-DF12-CB0	CAN, Blue, no sound	pcs
S4-DF12-CBS	S4-DF12-CBS	CAN, Blue, SD card (speech)	pcs
S4-DF12-CR0	S4-DF12-CR0	CAN, Red, no sound	pcs
S4-DF12-CR1	S4-DF12-CR1	CAN, Red, Flash 1mb (arrival)	pcs
S4-DF12-CRS	S4-DF12-CRS	CAN, Red, SD card (speech)	pcs
S4-DF12-CW0	S4-DF12-CW0	CAN, White, no sound	pcs
S4-DF12-CW1	S4-DF12-CW1	CAN, White, Flash 1mb (arrival)	pcs
S4-DF12-DB1	S4-DF12-DB1		pcs
S4-DF12-DBS	S4-DF12-DBS		pcs
S4-DF12-DR0	S4-DF12-DR0		pcs
S4-DF12-DR1	S4-DF12-DR1		pcs
S4-DF12-DRS	S4-DF12-DRS		pcs
S4-DF12-DW0	S4-DF12-DW0		pcs
S4-DF12-DW1	S4-DF12-DW1		pcs
S4-DF12-DWS	S4-DF12-DWS		pcs
A00169236	Lens VV 32x16 Grey - DF12		pcs
A00170564	Diffusing filter DF12		pcs

**S4-MIO2**

Part. No	PART	DESCRIPTION	QTY.
S4-MIO2-C3BACX0	S4-MIO2-C3BACX0	Blue, with accoustic signal	pcs
S4-MIO2-C3BXCX0	S4-MIO2-C3BXCX0	Blue, no accoustic signal	pcs
S4-MIO2-C3RACX0	S4-MIO2-C3RACX0	Red, with accoustic signal	pcs
S4-MIO2-C3RXCX0	S4-MIO2-C3RXCX0	Red, no accoustic signal	pcs
S4-MIO2-C3WACX0	S4-MIO2-C3RACX0	White, with accoustic signal	pcs
S4-MIO2-C3WXCX0	S4-MIO2-C3RXCX0	White, no accoustic signal	pcs
A00103194	Lens floor ind. 16x16 blue	SABIC PC 945A UL94-V0, Halogen	pcs
A00103201	Lens floor ind. 16x16 red		pcs

**S4-MIO3**

Part. No	PART	DESCRIPTION	QTY.
S4-MIO3-C3BACX0	S4-MIO3-C3BACX0	Blue, with accoustic signal	pcs
S4-MIO3-C3BXCX0	S4-MIO3-C3BXCX0	Blue, no accoustic signal	pcs
S4-MIO3-C3RACX0	S4-MIO3-C3RACX0	Red, with accoustic signal	pcs
S4-MIO3-C3RXCX0	S4-MIO3-C3RXCX0	Red, no accoustic signal	pcs
S4-MIO3-C3WACX0	S4-MIO3-C3RACX0	White, with accoustic signal	pcs
S4-MIO3-C3WXCX0	S4-MIO3-C3RXCX0	White, no accoustic signal	pcs
A00103210	Lens floor indicator 32x16 blue		pcs
A00103229	Lens VV 32x16 clear Gray		pcs
A00103292	Lens VV 32x16 frosted Gray		pcs

**TFT/LCD**

Part. No	PART	DESCRIPTION	QTY.
A00172420	TFT 7"	TFT, CAN-BUS	pcs
A00172428	TFT 4,3"	TFT, konventionell	pcs
A00173340	Lens TFT 4,3"	TFT LCD	pcs
A00173348	Lens TFT 7"	Lens for TFT display	pcs

**FREQUENCY INVERTERS**

**ABB ACSM1**

Part. No	PART	DESCRIPTION	QTY.
A00145603	Frequency inverter ABB		pcs
A00145612	AC Reactor ABB CHK-04		pcs
A00145621	EMC-Filter ABB JFI-03		pcs

**Omron L7**

Part. No	PART	DESCRIPTION	QTY.
A00151365	Omron VVVF L7 400V 55kW		pcs
A00133518	EMC-Filter 3018 400V Omron L7 4-5,5kW	3018	pcs
A00133527	EMC-Filter 3035 400V Omron L7 7,5-11kW	3035	pcs
A00133536	EMC-Filter 3060 400V Omron L7 15-18kW	3060	pcs
A00133545	EMC-Filter 3070 400V Omron L7 22-30kW	3070	pcs
A00133554	EMC-Filter 3130 400V Omron L7 37-55 KW	3130	pcs
A00133563	EMC-Filter 2035 230V Omron L7 4-5,5 kW	2035	pcs
A00133572	EMC-Filter 2060 230V Omron L7 7,5-11kW	2060	pcs
A00133581	EMC-Filter 2100 230V Omron L7 15-18 kW	2100	pcs
A00133590	PG-card (L7) PGB2 normal		pcs
A00133607	PG-card (L7) PGX2 line driver		pcs
A00133616	PG-Kort (L7) PGF2 PM		pcs
A00133901	Brake resistance 450W 70ohm		pcs
A00133910	Brake resistance 600W 75 ohm		pcs
A00133938	Brake resistance 1000W 13ohm		pcs
A00133956	Brake resistance 1000W 40ohm		pcs
A00133974	Brake resistance 2000W 6.5ohm		pcs
A00133992	Brake resistance 2000W 26ohm		pcs

A00134017	Brake resistance 5000W 20 Ohm		pcs
A00134026	AC Reactor L7 200V 4kW		pcs
A00134035	AC Reactor L7 200V 5,5kW		pcs
A00134044	AC Reactor L7 200V 7,5kW		pcs
A00134053	AC Reactor L7 200V 11kW		pcs
A00134062	AC Reactor L7 200V 15kW		pcs
A00134071	AC Reactor L7 200V 18kW		pcs
A00134080	AC Reactor L7 400V 4kW		pcs
A00134099	AC Reactor L7 400V 5,5Kw		pcs
A00134106	AC Reactor L7 400V 7,5kW		pcs
A00134115	AC Reactor L7 400V 11kW		pcs
A00134124	AC Reactor L7 400V 15kW		pcs
A00134133	AC Reactor L7 400V 18kW		pcs
A00134142	AC Reactor L7 400V 22kW		pcs
A00134151	AC Reactor L7 400V 30kW		pcs
A00134160	AC Reactor L7 400V 37kW		pcs
A00134179	AC Reactor L7 400V 55kW		pcs
A00156468	EMC-Filter 2035 230V Omron L7 4-5,5kW	2035	pcs
A00156484	EMC-Filter 2130 230V Omron L7 22-30kW	2130	pcs
A00156492	AC Reactor L7 200V 22kW		pcs
A00163084	Brake resistance 1000W 65ohm		pcs
A00164300	AC Reactor L7 200V 37kW		pcs
A00166860	AC Reactor L7 400V 45kW	115A	pcs

Omron LX

Part. No	PART	DESCRIPTION	QTY.
A00169044	Omron LX 400V 5,5kW	14A	pcs
A00169052	Omron LX 400V 7,5kW	19A	pcs
A00169060	Omron LX 400V 11kW	27A	pcs
A00169068	Omron LX 400V 15kW	34A	pcs
A00169076	Omron LX 400V 18,5kW	41A	pcs
A00172820	Omron LX 400V 4kW	11A	pcs
A00133901	Brake resistance 450W 70ohm		pcs
A00133910	Brake resistance 600W 75 ohm		pcs
A00133938	Brake resistance 1000W 13ohm		pcs
A00133956	Brake resistance 1000W 40ohm		pcs
A00133974	Brake resistance 2000W 6.5ohm		pcs
A00133992	Brake resistance 2000W 26ohm		pcs
A00134017	Brake resistance 5000W 20 Ohm		pcs
A00163084	Brake resistance 1000W 65ohm		pcs
A00169084	EMC-Filter 3030 400V Omron LX 5,5-11kW	3030	pcs
A00169092	EMC-Filter 3053 400V Omron LX 15-22kW	3053	pcs
A00169100	PG-card (LX) PG01 TTL interface 30kHz		pcs
A00169108	PG-card (LX) ABS card Endat/ Hiperface		pcs
A00169708	Programming cable LX		pcs
A00172828	EMC-Filter 3030 400V Omron LX 4kW	3030	pcs
A00173196	EMC-Filter 3030 400V Omron LX 15-22kW	3030	pcs

Vacon NXP

Part. No	PART	DESCRIPTION	QTY.
A00155332	Vacon NXP00455A2	38A 500V IP21	pcs
A00157876	Vacon NXP00095A2	9A 500V IP21	pcs
A00157900	Vacon NXP00125A2	9A 500V IP21	pcs
A00157908	Vacon NXP00165A2	12A 500V IP21	pcs
A00157916	Vacon NXP00225A2	16A 500V IP21	pcs
A00157924	Vacon NXP00315A2	22A 500V IP21	pcs
A00157932	Vacon NXP00385A2	31A 500V IP21	pcs
A00157940	Vacon NXP00615A2	45A 500V IP21	pcs
A00157948	Vacon NXP00725A2	61A 500V IP21	pcs
A00157956	Vacon NXP00875A2	72A 500V IP21	pcs
A00157964	Vacon NXP01055A2	87A 500V IP21	pcs
A00157972	Vacon NXP01405A2	105A 500V IP21	pcs
A00161132	Vacon NXP00312A2 200V	25A 200V IP21	pcs
A00161140	Vacon NXP00252A2 200V	17A 200V IP21	pcs
A00162500	Vacon NXP00482A2 200V	31A 200V IP21	pcs
A00162508	Vacon NXP00612A2 200V	48A 200V IP21	pcs
A00162516	Vacon NXP00752A2 200V	61A 200V IP21	pcs
A00162524	Vacon NXP00882A2 200V	75A 200V IP21	pcs
A00162532	Vacon NXP01142A2 200V	88A 200V IP21	pcs
A00133901	Brake resistance 450W 70ohm		pcs
A00133910	Brake resistance 600W 75 ohm		pcs
A00133938	Brake resistance 1000W 13ohm		pcs
A00133956	Brake resistance 1000W 40ohm		pcs
A00133974	Brake resistance 2000W 6.5ohm		pcs
A00133992	Brake resistance 2000W 26ohm		pcs
A00134017	Brake resistance 5000W 20 Ohm		pcs
A00157228	PG-card Vacon OPT-BB	Encoder ENDAT	pcs
A00157884	Vacon Reactor ND09A	9A 500V IP21	pcs
A00157980	Vacon Reactor ND12A	12A 500V IP21	pcs
A00157988	Vacon Reactor ND16A	16A 500V IP21	pcs
A00157996	Vacon Reactor ND23A	23A 500V IP21	pcs
A00158004	Vacon Reactor ND31A	31A 500V IP21	pcs
A00158012	Vacon Reactor ND38A	38A 500V IP21	pcs
A00158020	Vacon Reactor ND46A	46A 500V IP21	pcs
A00158028	Vacon Reactor ND61A	61A 500V IP21	pcs
A00159988	PG-card Vacon OPT-A5	Encoder board	pcs
A00161876	PG-card Vacon OPT-D9	Tacho analog Mono Space	pcs
A00163084	Brake resistance 1000W 65ohm		pcs
A00171932	Data cable 9M/9F Pin2Pin 15m	Vacon console	pcs

Yaskawa L1000

Part. No	PART	DESCRIPTION	QTY.
A00160004	Yaskawa L1000A 400V 4kW	9,2A	pcs
A00160012	Yaskawa L1000A 400V 5,5kW	14,8A	pcs
A00160020	Yaskawa L1000A 400V 7,5kW	18A	pcs
A00160028	Yaskawa L1000A 400V 11kW	24A	pcs
A00160036	Yaskawa L1000A 400V 15kW	31A	pcs

A00160044	Yaskawa L1000A 400V 18kW	39A	pcs
A00160052	Yaskawa L1000A 400V 22kW	45A	pcs
A00160060	Yaskawa L1000A 400V 30kW	60A	pcs
A00160068	Yaskawa L1000A 400V 37kW	75A	pcs
A00160076	Yaskawa L1000A 400V 45kW	91A	pcs
A00160860	Yaskawa L1000A 200V 5,5kW	25A	pcs
A00160868	Yaskawa L1000A 200V 7,5kW	33A	pcs
A00160876	Yaskawa L1000A 200V 11kW	47A	pcs
A00160884	Yaskawa L1000A 200V 15kW	60A	pcs
A00160892	Yaskawa L1000A 200V 18kW	75A	pcs
A00161788	Yaskawa L1000A 400V 55kW	112A	pcs
A00164284	Yaskawa L1000A 200V 37kW	145 A	pcs
A00168180	Yaskawa L1000A 200V 22kW	85A	pcs
A00168964	Yaskawa L1000A 200V 30kW	115 A	pcs
A00133901	Brake resistance 450W 70ohm		pcs
A00133910	Brake resistance 600W 75 ohm		pcs
A00133938	Brake resistance 1000W 13ohm		pcs
A00133956	Brake resistance 1000W 40ohm		pcs
A00133974	Brake resistance 2000W 6.5ohm		pcs
A00133992	Brake resistance 2000W 26ohm		pcs
A00134017	Brake resistance 5000W 20 Ohm		pcs
A00160084	PG-card (L1000) B3 TTL interface 30kHz		pcs
A00160092	PG-card (L1000) X3 Line Driver 300kHz		pcs
A00160100	PG-card (L1000) F3 card Endat/ Hiperface		pcs
A00160108	Yaskawa AC Reactor 4kW	400V <9A	pcs
A00160116	Yaskawa AC Reactor 5,5k-7,5kW	400V 10-18A	pcs
A00160124	Yaskawa AC Reactor 11kW	400V 19-24A	pcs
A00160132	Yaskawa AC Reactor 15kW	400V 25-31A	pcs
A00160172	Yaskawa Filter 400V 4-7,5kW	L1000, 9,2-25A	pcs
A00160180	Yaskawa Filter 400V 11-15kW	L1000 26-44A	pcs
A00160188	Yaskawa Filter 400V 18-22kW	L1000 45-60A	pcs
A00160196	Yaskawa Filter 400V 30kW	L1000 61-72A	pcs
A00160204	Yaskawa Filter 400 37-45kW	L1000 73-105A	pcs
A00160212	Yaskawa Filter 400V 55kW	L1000 106-170A	pcs
A00160452	PG-card (L1000) E3		pcs
A00161796	Yaskawa Filter 200V 5,5-7,5kW	L1000 <52A	pcs
A00161804	Yaskawa Filter 200V 11kW	L1000 <68A	pcs
A00163084	Brake resistance 1000W 65ohm		pcs
A00164292	Yaskawa Filter 200V 37kW	L1000 170A	pcs
A00165204	Yaskawa Filter 200V 15-18kW	L1000 <96A	pcs

Zetadyn 3BF

Part. No	PART	DESCRIPTION	QTY.
A00142526	Zetadyn 3BF011	11A	pcs
A00142535	Zetadyn 3BF013	13A	pcs
A00142544	Zetadyn 3BF017	17A	pcs
A00142553	Zetadyn 3BF023	23A	pcs
A00142562	Zetadyn 3BF032	32A	pcs
A00142651	Zetadyn EMC-Filter FEF011KK4D	For 3BF011	pcs
A00142688	Zetadyn EMC-Filter FEF023KK4D	For 3BF013-23	pcs



A00142704	Zetadyn Line Reactor ND011	For 3BF011	pcs
A00142713	Zetadyn Console, Zetapad	Zetapad	pcs
A00142722	Zetadyn Brake resistance BR11-A	For 3__011 / 11A	pcs
A00142731	Zetadyn Brake resistance BR17-3	For 3__011-17 / 11-17A	pcs
A00142740	Zetadyn Brake resistance BR25-3	For 3__023-32 / 23-34A	pcs
A00142768	Zetadyn Bromschopper BC50	For 3__032-74	pcs
A00142786	Zetadyn Bromschopper BC100	For 3__074	pcs
A00142795	PG-card (Zetadyn) 3BF, EnDat, BR		pcs
A00147398	Zetadyn BR/BC-Cable 5 m 3BF011-023	2,5 mm2	pcs
A00155876	Zetadyn Line Reactor ND110		pcs
A00155884	Zetadyn EMC-Filter FEF085KL4D		pcs
A00157124	Zetadyn Line Reactor ND062	For 3BF062	pcs
A00157132	Zetadyn Brake resistance BR50-2-3	For 3__032-74 / 40-74A	pcs
A00157140	Zetadyn EMC-Filter FEF074KK4D	For 3BF062-74	pcs
A00158892	Zetadyn Line Reactor ND023	For 3BF023	pcs
A00158900	Zetadyn Line Reactor ND074	For 3BF074	pcs
A00158908	Zetadyn Line Reactor ND050	For 3BF050	pcs
A00158916	Zetadyn Line Reactor ND032	For 3BF032	pcs
A00158924	Zetadyn Line Reactor ND040	For 3BF040	pcs
A00158932	Zetadyn Line Reactor ND013	For 3BF013	pcs
A00158940	Zetadyn Line Reactor ND017	For 3BF017	pcs
A00158956	Zetadyn EMC-Filter FEF040KK4D	For 3BF032-40	pcs
A00158964	Zetadyn EMC-Filter FEF050KK4D	For 3BF050	pcs

### Zetadyn 3CS

Part. No	PART	DESCRIPTION	QTY.
A00142722	Zetadyn Brake resistance BR11-A	For 3__011 / 11A	pcs
A00142731	Zetadyn Brake resistance BR17-3	For 3__011-17 / 11-17A	pcs
A00142740	Zetadyn Brake resistance BR25-3	For 3__023-32 / 23-34A	pcs
A00157132	Zetadyn Brake resistance BR50-2-3	For 3__032-74 / 40-74A	pcs

### Zetadyn 4CS

Part. No	PART	DESCRIPTION	QTY.
A00170588	Zetadyn 4CS013	13A, including ZETAPAD	pcs
A00170652	Zetadyn 4CS017	17A, including ZETAPAD	pcs
A00170676	Zetadyn 4CS023	23A, including ZETAPAD	pcs
A00170684	Zetadyn 4CS032	32A, including ZETAPAD	pcs
A00142722	Zetadyn Brake resistance BR11-A	For 3__011 / 11A	pcs
A00142731	Zetadyn Brake resistance BR17-3	For 3__011-17 / 11-17A	pcs
A00142740	Zetadyn Brake resistance BR25-3	For 3__023-32 / 23-34A	pcs
A00147389	4CS Zetadyn BR/BC-Cable 3 m 2,5mm2	2,5 mm2	pcs
A00157132	Zetadyn Brake resistance BR50-2-3	For 3__032-74 / 40-74A	pcs
A00170628	Zetadyn Control Line, X-IN, 5m, 4CS		pcs
A00170636	Zetadyn Control Line, X-OUT, 5m, 4CS		pcs
A00170644	Zetadyn Control Line, STO, 5m, 4CS	Not when brake module	pcs
A00170692	Zetadyn 4CS bromsmodul 207V	Brake module contains card STO	pcs
A00172836	Zetadyn Control Line, X-IN, 25m, 4CS		pcs
A00172844	Zetadyn Control Line, X-OUT, 25m, 4CS		pcs
A00172852	Zetadyn Control Line, STO, 25m, 4CS	Ej vid bromsmodul	pcs

A00173268	Zetadyn Control Line, X-IN, 10m, 4CS	Control of digital inputs	pcs
A00173276	Zetadyn Control Line, X-OUT, 10m, 4CS	Evaluation of digital outputs	pcs
A00173284	Zetadyn Safety Circuit cable, 10m, 4CS	Brake Module - control / analy	pcs
A00173292	Zetadyn Contactor Supply cable, 10m, 4CS	Contactor control, power suppl	pcs
A00160172	Yaskawa Filter 400V 4-7,5kW	L1000, 9,2-25A	pcs
A00133572	EMC-Filter 2060 230V Omron L7 7,5-11kW	2060	pcs
A00133581	EMC-Filter 2100 230V Omron L7 15-18 kW	2100	pcs
A00156468	EMC-Filter 2035 230V Omron L7 4-5,5kW	2035	pcs
A00156484	EMC-Filter 2130 230V Omron L7 22-30kW	2130	pcs
A00165204	Yaskawa Filter 200V 15-18kW	L1000 <96A	pcs
A00164292	Yaskawa Filter 200V 37kW	L1000 170A	pcs
A00161804	Yaskawa Filter 200V 11kW	L1000 <68A	pcs
A00161796	Yaskawa Filter 200V 5,5-7,5kW	L1000 <52A	pcs
A00169084	EMC-Filter 3030 400V Omron LX 5,5-11kW	3030	pcs
A00169092	EMC-Filter 3053 400V Omron LX 15-22kW	3053	pcs
A00172828	EMC-Filter 3030 400V Omron LX 4kW	3030	pcs
A00173196	EMC-Filter 3030 400V Omron LX 15-22kW	3030	pcs
A00142651	Zetadyn EMC-Filter FEF011KK4D	For 3BF011	pcs
A00133563	EMC-Filter 2035 230V Omron L7 4-5,5 kW	2035	pcs
A00133554	EMC-Filter 3130 400V Omron L7 37-55 KW	3130	pcs
A00133545	EMC-Filter 3070 400V Omron L7 22-30kW	3070	pcs
A00160180	Yaskawa Filter 400V 11-15kW	L1000 26-44A	pcs
A00160188	Yaskawa Filter 400V 18-22kW	L1000 45-60A	pcs
A00160196	Yaskawa Filter 400V 30kW	L1000 61-72A	pcs
A00160204	Yaskawa Filter 400 37-45kW	L1000 73-105A	pcs
A00160212	Yaskawa Filter 400V 55kW	L1000 106-170A	pcs
A00145621	EMC-Filter ABB JFI-03		pcs
A00155884	Zetadyn EMC-Filter FEF085KL4D		pcs
A00157140	Zetadyn EMC-Filter FEF074KK4D	For 3BF062-74	pcs
A00158964	Zetadyn EMC-Filter FEF050KK4D	For 3BF050	pcs
A00158956	Zetadyn EMC-Filter FEF040KK4D	For 3BF032-40	pcs
A00133518	EMC-Filter 3018 400V Omron L7 4-5,5kW	3018	pcs
A00133527	EMC-Filter 3035 400V Omron L7 7,5-11kW	3035	pcs
A00133536	EMC-Filter 3060 400V Omron L7 15-18kW	3060	pcs
A00142688	Zetadyn EMC-Filter FEF023KK4D	For 3BF013-23	pcs
A00160132	Yaskawa AC Reactor 15kW	400V 25-31A	pcs
A00142704	Zetadyn Line Reactor ND011	For 3BF011	pcs
A00157980	Vacon Reactor ND12A	12A 500V IP21	pcs
A00157988	Vacon Reactor ND16A	16A 500V IP21	pcs
A00157996	Vacon Reactor ND23A	23A 500V IP21	pcs
A00158004	Vacon Reactor ND31A	31A 500V IP21	pcs
A00158012	Vacon Reactor ND38A	38A 500V IP21	pcs
A00158020	Vacon Reactor ND46A	46A 500V IP21	pcs
A00158028	Vacon Reactor ND61A	61A 500V IP21	pcs
A00157124	Zetadyn Line Reactor ND062	For 3BF062	pcs
A00158892	Zetadyn Line Reactor ND023	For 3BF023	pcs
A00158900	Zetadyn Line Reactor ND074	For 3BF074	pcs
A00160124	Yaskawa AC Reactor 11kW	400V 19-24A	pcs
A00160116	Yaskawa AC Reactor 5,5k-7,5kW	400V 10-18A	pcs
A00160108	Yaskawa AC Reactor 4kW	400V <9A	pcs
A00158940	Zetadyn Line Reactor ND017	For 3BF017	pcs

A00158932	Zetadyn Line Reactor ND013	For 3BF013	pcs
A00158924	Zetadyn Line Reactor ND040	For 3BF040	pcs
A00158916	Zetadyn Line Reactor ND032	For 3BF032	pcs
A00158908	Zetadyn Line Reactor ND050	For 3BF050	pcs
A00157884	Vacon Reactor ND09A	9A 500V IP21	pcs
A00134160	AC Reactor L7 400V 37kW		pcs
A00134080	AC Reactor L7 400V 4kW		pcs
A00134071	AC Reactor L7 200V 18kW		pcs
A00134062	AC Reactor L7 200V 15kW		pcs
A00134053	AC Reactor L7 200V 11kW		pcs
A00134044	AC Reactor L7 200V 7,5kW		pcs
A00134035	AC Reactor L7 200V 5,5kW		pcs
A00134026	AC Reactor L7 200V 4kW		pcs
A00145612	AC Reaktor ABB CHK-04		pcs
A00134099	AC Reactor L7 400V 5,5Kw		pcs
A00134106	AC Reactor L7 400V 7,5kW		pcs
A00134115	AC Reactor L7 400V 11kW		pcs
A00134179	AC Reactor L7 400V 55kW		pcs
A00156492	AC Reactor L7 200V 22kW		pcs
A00164300	AC Reactor L7 200V 37kW		pcs
A00166860	AC Reactor L7 400V 45kW	115A	pcs
A00134151	AC Reactor L7 400V 30kW		pcs
A00134142	AC Reactor L7 400V 22kW		pcs
A00134133	AC Reactor L7 400V 18kW		pcs
A00134124	AC Reactor L7 400V 15kW		pcs
A00155876	Zetadyn Line Reactor ND110		pcs
A00160084	PG-card (L1000) B3 TTL interface 30kHz		pcs
A00169108	PG-card (LX) ABS card Endat/ Hiperface		pcs
A00169100	PG-card (LX) PG01 TTL interface 30kHz		pcs
A00159988	PG-card Vacon OPT-A5	Encoder car	pcs
A00161876	PG-card Vacon OPT-D9	Tacho analog Mono Space	pcs
A00157228	PG-card Vacon OPT-BB	Encoder ENDAT	pcs
A00133616	PG-Kort (L7) PGF2 PM		pcs
A00133607	PG-card (L7) PGX2 line driver		pcs
A00133590	PG-card (L7) PGB2 normal		pcs
A00160452	PG-card (L1000) E3		pcs
A00160100	PG-card (L1000) F3 card Endat/ Hiperface		pcs
A00160092	PG-card (L1000) X3 Line Driver 300kHz		pcs
A00142795	PG-card (Zetadyn) 3BF, EnDat, BR		pcs
A00142722	Zetadyn Brake resistance BR11-A	For 3__011 / 11A	pcs
A00134017	Brake resistance 5000W 20 Ohm		pcs
A00133992	Brake resistance 2000W 26ohm		pcs
A00133974	Brake resistance 2000W 6.5ohm		pcs
A00133910	Brake resistance 600W 75 ohm		pcs
A00133901	Brake resistance 450W 70ohm		pcs
A00163084	Brake resistance 1000W 65ohm		pcs
A00133956	Brake resistance 1000W 40ohm		pcs
A00133938	Brake resistance 1000W 13ohm		pcs
A00142740	Zetadyn Brake resistance BR25-3	For 3__023-32 / 23-34A	pcs
A00142731	Zetadyn Brake resistance BR17-3	For 3__011-17 / 11-17A	pcs
A00157132	Zetadyn Brake resistance BR50-2-3	For 3__032-74 / 40-74A	pcs

A00147389	4CS Zetadyn BR/BC-Cable 3 m 2,5mm2	2,5 mm2	pcs
A00170692	Zetadyn 4CS brake module 207V	Brake modules contains card STO	pcs
A00147398	Zetadyn BR/BC-Cable 5 m 3BF011-023	2,5 mm2	pcs
A00142786	Zetadyn Bromschopper BC100	For 3__074	pcs
A00142768	Zetadyn Bromschopper BC50	For 3__032-74	pcs
A00142759	Zetadyn Bromschopper BC25	For 3__013-32	pcs

## Hydraulics

### Bucher

Part. No	PART	DESCRIPTION	QTY.
A00174364	Hydraul package Bucher		pcs

### GMV

Part. No	PART	DESCRIPTION	QTY.
A00170452	Controller based on order		pcs

## IO-Units

### S4-I10

Part. No	PART	DESCRIPTION	QTY.
S4-I10-BT	S4-I10-BT	I10 Bluetooth	pcs

### S4-IO8

Part. No	PART	DESCRIPTION	QTY.
S4-IO8-DN	S4-IO8-DN		pcs
S4-IO8-DP	S4-IO8-DP	with DIN-rail	pcs
S4-IO8-N	S4-IO8 Negative logic		pcs
S4-IO8-P	S4-IO8 Postive logic		pcs
S4-IO8D-PB	S4-IO8D-PB		pcs
A00144702	Terminals S4-IO8		pcs

### S4-USC01

Part. No	PART	DESCRIPTION	QTY.
USC01	Stand alone floor indicator system		pcs
USC01-Car mounted	Stand alone floor indicator system		pcs
A00174228	Encoder belt T5-10		pcs

## Lights

Part. No	PART	DESCRIPTION	QTY.
A00145934	Skåpsarmatur & Lysrör		pcs
A00160972	Bänkarmatur 13W inkl T5 lysrör		pcs
A00159596	Bänkarmatur 1*15W Plåtg. med lysrör		pcs

A00173596	Skåpsbelysning LED	Magnetfäste, 2m cable	pcs
A00114217	Pull cord switch for shaft lightning		pcs
A00161956	Shaft lighting SlimLight 20m 7 arm		pcs
A00164172	Shaft lighting SlimLight 26m 9 arm		pcs
A00164180	Shaft lighting SlimLight 29m 10 arm	24W	pcs
A00164188	Shaft lighting SlimLight 8m 3 arm		pcs
A00164196	Shaft lighting SlimLight 11m 4 arm		pcs
A00166300	Shaft lighting SlimLight 14m 5 arm 28W		pcs
A00169268	Shaft lighting SlimLight cable 2m		pcs
A00168684	Armatyr shaft lighting 2x18W IP65	Ritning A00165452-02	pcs
A00156388	Pull cord switch for shaft lightning	With terminal blocking. Not standard	pcs
A00150080	Armatyr shaft lighting IP54		pcs
A00168692	Sign "Shaft lighting"		pcs
A00137621	Light fixture shaft light 36W		pcs
A00137630	Light tube 36W		pcs
A00137658	Outlet for shaft lighting SV		pcs
A00159028	Outlet for shaft lighting GB		pcs
A00159916	Limit switch XCKS549, Telemeq	For shaft lighting	pcs
A00137694	1,5m cable for shaft light		pcs
A00137701	3m cable shaft light system		pcs
A00137710	4m cable for shaft light		pcs
A00137649	10 m supply cable shaft light system		pcs
A00174292	Converter for LED-spot mini, 12-24V		pcs
A00174276	LED-spot mini, fitted, chrome	3000K, 1,2W, Diameter: 32mm	pcs
A00174284	LED-spot mini, fitted, White	3000K, 1,2W, Diameter: 32mm	pcs
A00174340	LED-spot dot, external h, White	3000K, 1,2W, Diameter: 30mm	pcs
A00174804	LED-panel, 300x300x11, warm white	9,5W, 750 Lumen	pcs
A00174812	LED-panel, 300x600x11, warm white	20W, 1500 Lumen	pcs
A00174820	LED-panel, 600x600x11, warm white	42,6W, 2000 Lumen	pcs
A00174828	LED-panel, 300x1200x11, warm white	45,2W, 3000 Lumen	pcs

## Other installation materials

Part. No	PART	DESCRIPTION	QTY.
A00106744	Spiral hose 20mm		pcs
A00108733	Step protection/Protective duct		pcs
A00108313	Lamp 14/5W E14		pcs
A00108322	Lamp holder E14	Vinkel vit	pcs
A00145014	Box A2		pcs
A00114155	Coupling 105x70x50	Photo cell extender	pcs
A00106575	Cable duct B40xB40 40m/frp	40 pcs 2m per pack	m
A00106539	Cable duct B60xH40 HF Tät		m
A00106548	Cable duct B25xH40 72m/frp	FP=72 m L=2 m	m
A00106566	Cable duct B25xH60 24/frp		m
A00138513	Emergency signal car, prewired 5m		pcs
A00138497	Emergency stop grop , prewired 2m		pcs
A00108359	Insulation tape		pcs
A00108297	Screw TKXH 4x25 elförz. 100 p		frp
A00108288	Screw TKXH 4x20 elförz. 100 p		frp

A00106753	Spiral hose 25mm	pcs
A00107949	Cable tie T50R Nat 100	frp
A00108028	Clamp TK 7-10	frp
A00108037	Clamp TK 14-20	pcs
A00108046	Clamp TK 20-26	pcs
A00108055	Clamp TK 20-26 (1st)	pcs
A00108064	Clamp TC 5-7	frp
A00108073	Clamp TC 7-10	frp
A00108224	Expander screw M8x75 FZB	pcs
A00108260	French screw T6S 8x40mm	pcs
A00108279	French screw T6S 65x8mm	pcs
A00138504	Emergency stop, prewired 5m cable	pcs

## Overload Units

### Omega

Part. No	PART	DESCRIPTION	QTY.
A00173108	Överlastvåg Omega 800 R	for linsträckning	pcs

### VK-Series

Part. No	PART	DESCRIPTION	QTY.
A00150473	Overload device VK3i Dinacell	For rope	pcs
A00157260	Overload device VK3-SV Dinacell	For balk	pcs
A00151409	Overload sensor Balk Dinacell	For VK-3SV	pcs
A00164812	Overload sensor USB u00f85-13mm Dinacell	For VK3i	pcs
A00164820	USB-interface for connection, 6 ports	For VK3i	pcs
A00164828	USB-interface for connection, 12 ports	For VK3i	pcs
A00166172	Overload sensor TCA for korg USB	USB	pcs
A00166556	USB-interface for connection, 6 ports	For VK3i	pcs
A00166868	Censor 20mm LCA2 3t USB	For VK3i with USB	pcs
A00168060	Overload sensor TCA for car rubber Dummy	USB	pcs
A00169444	USB-interf. for connection, 12 ports 10m	For VK3i	pcs
A00169572	Overload sensor USB u00f85-13mm Dinacell, 5m	For VK3i	pcs
A00164812	Overload sensor USB u00f85-13mm Dinacell	For VK3i	pcs
A00166868	Censor 20mm LCA2 3t USB	For VK3i with USB	pcs
A00166172	Overload sensor TCA for korg USB	USB	pcs
A00168060	Overload sensor TCA for car rubber Dummy	USB	pcs
A00169444	USB-interface for connection, 12 ports 10m	For VK3i	pcs
A00166556	USB-interface for connection, 6 ports	For VK3i	pcs
A00164828	USB-interface for connection, 12 ports	For VK3i	pcs
A00164820	USB-interface for connection, 6 ports	For VK3i	pcs
A00169572	Overload sensor USB u00f85-13mm Dinacell, 5m	For VK3i	pcs
A00151409	Overload sensor Balk Dinacell	For VK-3SV	pcs
A00174684	Väska vägning korg/motv 6x5-13mm	1:1 , 2:1. Bag included	pcs
A00174692	Väska vägning korg/motv 6x13-20mm	1:1 , 2:1. Bag included	pcs

## Overspeed Governor

### Bode ASV

Part. No	PART	DESCRIPTION	QTY.
A00171396	HR Bode A3 300mm Vn=0,5m/s		pcs
A00171820	HR Bode A3 200mm Vn=0,6m/s		pcs
A00172148	HR Bode A3 300mm Vn=0,6m/s		pcs
A00172444	HR Bode A3 200mm Vn=0,5m/s		pcs
A00172516	HR Bode A3 200mm Vn=0,63m/s		pcs
A00172556	HR Bode A3 300mm Vn=0,53m/s		pcs
A00172580	HR Bode A3 300mm Vn=0,55m/s		pcs
A00172788	HR Bode A3 200mm Vn=0,55m/s		pcs
A00173244	HR Bode A3 200mm Vn=0,53m/s		pcs

### Montanari RQ

Part. No	PART	DESCRIPTION	QTY.
A00170972	Speed Governor A3 0,50m/s	Machine room, manual reset	pcs
A00172436	Speed Governor A3 0,5m/s	Machine room/ shaft, or reset	pcs
A00171812	Speed Governor A3 0,60m/s	Machine room, manual reset	pcs
A00169548	Speed Governor A3 0,7m/s	Machine room, manual reset	pcs
A00169556	Speed Governor A3 0,63m/s	Machine room, manual reset	pcs
A00169604	Speed Governor A3 300mm 1,0m/s	Machine room, manual reset	pcs
A00170428	Speed Governor A3 1m/s	Machine room, manual reset	pcs
A00170596	Speed Governor A3 300mm 0,60m/s	Machine room, manual reset	pcs
A00170844	HR RQ A3 200mm Vn=1,0 m/s, 24V	Machine room/ shaft, or reset	pcs
A00170860	Speed Governor 0,63m/s	Machine room, manual reset	pcs
A00171388	Speed Governor A3 0,42m/s	Machine room, manual reset	pcs
A00171828	Speed Governor A3 0,60m/s	Machine room/ shaft, or reset	pcs
A00171908	Speed Governor A3 0,60m/s	Machine room/ shaft, or reset	pcs
A00171948	Speed Governor A3 0,5m/s	Machine room, manual reset	pcs
A00172284	Speed Governor A3 1m/s	Pgiv 250p, M-rum, man-reset	pcs
A00172300	HR RQ A3 250mm Vn=1 m/s	Machine room, manual reset	pcs
A00172348	Speed Governor A3 0,4m/s	Machine room, manual reset	pcs
A00172484	Speed Governor A3 0,55m/s	Machine room, manual reset	pcs
A00172620	Speed Governor 250mm A3 0,7m/s	Machine room, manual reset	pcs
A00172732	Speed Governor A3 0,65m/s	Machine room, manual reset	pcs
A00172756	Speed Governor A3 1m/s	Pgiv 250p, M-rum, man-reset	pcs
A00172764	Speed Governor A3 0,70m/s	Machine room/ shaft, or reset	pcs
A00172892	Speed Governor 0,63m/s	Machine room, manual reset	pcs
A00173148	Speed Governor A3 0,60m/s	Machine room/ shaft, or reset	pcs
A00173164	Speed Governor A3 0,80m/s	Machine room/ shaft, or reset	pcs
A00173260	Speed Governor A3 1,6m/s	Machine room/ shaft, or reset	pcs
A00173316	Speed Governor A3 300mm 0,8m/s	Machine room, manual reset	pcs
A00173324	Speed Governor 0,7m/s	Machine room/ shaft, or reset	pcs
A00169564	Tension weight TE00000608 200mm	TE	pcs
A00170324	Tension weight TE00000608 200mm	TEVBD200, Automatic Reset	pcs
A00170604	Tension weight TE00000608 300mm	TEVBD300, Automatic Reset	pcs
A00171956	Tension weight TE00000608 250mm	TEVBD250, Automatic Reset	pcs

## Panels

Part. No	PART	DESCRIPTION	QTY.
A00169244	Mounting plate for plastic frame		pcs
A00172092	Plastic frame (black) for S4-DF12-XX	Black plastic, painted svart	pcs
A00172100	Surface fitting floor indicator White	Black plastic, painted vit	pcs
A00172108	Plastic frame for LOP (black)	Black plastic, painted svart	pcs
A00172116	Surface fitting push buttons White	Black plastic, painted vit	pcs
A00106413	Buzzer 24 VDC for overload		pcs
A00169244	Mounting plate for plastic frame		pcs
A00102097	SecuFast M4x10 Buttonhead		pcs
A00166404	SecuFast M4x30 Flathead		pcs
A00166532	SecuFast M4x30 Buttonhead		pcs
A00102168	SecuFast M4x20 Flathead		pcs
A00102159	SecuFast M5x20 Flathead		pcs
A00102140	SecuFast M5x10 Flathead		pcs
A00102131	SecuFast M4x10 Flathead		pcs
A00102122	SecuFast M4x20 Buttonhead		pcs
A00102113	SecuFast M5x20 Buttonhead		pcs
A00102104	SecuFast M5x10 Buttonhead		pcs
A00156172	SecuFast M4x40 Buttonhead		pcs

## Photocell curtains

### Cedes LI

Part. No	PART	DESCRIPTION	QTY.
A00147558	Photo cell curtain Lift LI 2000mm	Supervised, full 2000mm	pcs
A00167748	Relay box cedes incl class 2 curtain		pcs
A00169132	Relay box cedes class 2 excl curtain		pcs
A00170468	Photo cell curtain Lift LI 1730mm	Supervised, full 1730mm	pcs
A00155412	Control unit for surv. curtain	LI Control unit	pcs
A00162764	Safety relay Cedes Li		pcs
A00164276	Montagekit FC curtain ,baksida cedes		par
A00170284	Capacitor till CEDES 10uF		pcs
A00170948	Black / Yellow plexilist for cedes montkit		par

### Weco Welig

Part. No	PART	DESCRIPTION	QTY.
A00170348	Photo cell curtain CH1730 WECO/WELIG KAT 2A	1730mm w power supply	pcs
A00170548	Photo cell curtain CH1730 WECO/WELIG KAT 2J	1730mm incl J profil	pcs
A00174628	Photo cell curtain CH1840 WECO/WELIG KAT 2A	1840mm w power supply	pcs
A00174636	Photo cell curtain CH1840 WECO/WELIG KAT 2J	1840mm w power supply	pcs
A00172156	WECO/WELIG KAT 2 power supply 24VCD	Power supply	pcs
A00173412	Extension cable 3,5m Ultra flex	Cable 3,5m	pcs

### Weco G5

Part. No	PART	DESCRIPTION	QTY.
----------	------	-------------	------



A00170356	Photo cell curtain, WECO, BAM94 series B	G5.BAM94 Not supervised	pcs
A00170364	WECO/3D 230VAC	3D eyd withG5 curtain	pcs

## Positioning

### INC-B

Part. No	PART	DESCRIPTION	QTY.
A00138693	Incremental encoder INC-B	Round	pcs
A00109143	Wall bracket L=240, encoder kit		pcs

### INC-K

Part. No	PART	DESCRIPTION	QTY.
A00138675	Incremental encoder INC-K		pcs
A00109143	Wall bracket L=240, encoder kit		pcs

### INC-K1FC

Part. No	PART	DESCRIPTION	QTY.
A00109143	Wall bracket L=240, encoder kit		pcs

### INC-M

Part. No	PART	DESCRIPTION	QTY.
A00138700	Incremental encoder INC-M	Motvikt	pcs
A00109143	Wall bracket L=240, encoder kit		pcs
A00138684	Inkrementalpaket car top INC-K1FC		pcs
A00109143	Wall bracket L=240, encoder kit		pcs
A00134320	Encoder 50p, 8m cable		pcs
A00103167	Ball bearings		pcs
A00109143	Wall bracket L=240, encoder kit		pcs

### Photo cell

Part. No	PART	DESCRIPTION	QTY.
A00137738	Comp.photo cell package/attachment 2fc		pcs
A00137747	Comp.photo cell package/attachment 3fc		pcs
A00137756	Comp.photo cell package/attachment 1fc		pcs
A00137792	Photo cell fork, Telemecanique		pcs
A00138424	Piano wire 0,7mm 150m		pcs
A00108911	Photo cell attachment (2)		pcs
A00108920	Photo cell attachment (3)		pcs
A00108948	Photo cell attachment (4)		pcs
A00109009	Wire attachment Plate for 3FC		pcs
A00138353	Wire attachment for 2 photo cells		pcs
A00138362	Wire attachment for 3 photo cells		pcs
A00108608	Flag short 120mm		pcs
A00159572	Flag long 340mm		pcs
A00108617	Flag long 240mm		pcs
A00138399	Photo cells 2st inkl. fäste		pcs
A00108993	Wire attachment Platta for 2FC		pcs

A00103176	Piano wire		kg
A00108957	Wall bracket 150mm photo cells		pcs
A00108617	Flag long 240mm		pcs
A00108608	Flag short 120mm		pcs
A00159572	Flag long 340mm		pcs
A00173788	Magnetic sensor BN 310-rz 3.0m	3m cable	pcs
A00173796	Magnetic sensor BP 15	Magnet red/green	pcs
A00169540	Magnetic sensor BN 120-RZ/V	3m cable	pcs
A00164612	Magnetic sensor BP 10		pcs
A00162396	Magnetic sensor BN 325-R-1279	3m cable	pcs
A00162388	Magnetic sensor BP 34		pcs
A00170268	Magnet 100x15x6		pcs

## Ropes

Part. No	PART	DESCRIPTION	QTY.
A00164372	6,5mm, FC 152-wired Pre stretched, 18,6kN	6,5mm, Pre stretched	m
A00164380	14mm, PAWO F3, 119,3kN	14mm, Steel core	m
A00164492	13mm, PAWO F7S, 116kN	13mm, Steel core	m
A00165004	12mm, PAWO F3, 86,8kN	12mm, Steel core	m
A00165924	10mm, PAWO F3, 60,5kN	10mm, Steel core	m
A00166116	11mm, PAWO F3, 73,4kN	11mm, Steel core	m
A00165420	6mm, PAWO F3, 27kN	6mm, Steel core	m
A00166796	6,5mm, PAWO F3, 25,9kN	6,5mm, Steel core	m
A00164372	6,5mm, FC 152-wired Pre stretched, 18,6kN	6,5mm, Pre stretched	m
A00164836	8mm, PAWO F3, 38kN	8mm, Steel core	m
A00165052	8mm, PAWO F7S, 44,6kN	8mm, Steel core	m
A00165228	8mm, FC 152-wired Pre stretched, 28,1kN	8mm, Pre stretched	m
A00168652	9mm, PAWO F7S, ?kN	9mm, Steel core	m
A00165924	10mm, PAWO F3, 60,5kN	10mm, Steel core	m
A00166060	10mm, PAWO F7S 69,5kN	10mm, Steel core	m
A00164236	10mm, FC 152-wired Pre stretched, 44kN	10mm, Pre stretched	m
A00166116	11mm, PAWO F3, 73,4kN	11mm, Steel core	m
A00166572	11mm, PAWO F7S, 83,1kN	11mm, Steel core	m
A00164508	11mm, FC 152-wired Pre stretched, 53,2 kN	11mm, Pre stretched	m
A00165004	12mm, PAWO F3, 86,8kN	12mm, Steel core	m
A00166764	12mm, PAWO F7S, 98,9kN	12mm, Steel core	m
A00164516	12mm, FC 152-wired Pre stretched, 63,3kN	12mm, Pre stretched	m
A00164492	13mm, PAWO F7S, 116kN	13mm, Steel core	m
A00166812	13mm, FC 152-wired Pre stretched, 74,3kN	13mm, Pre stretched	m
A00164380	14mm, PAWO F3, 119,3kN	14mm, Steel core	m
A00166772	14mm, PAWO F7S, 134,8kN	14mm, Steel core	m
A00165100	14mm, FC 152-wired Pre stretched, 86,2kN	14mm, Pre stretched	m
A00162004	Rope fasteners 9-10 mm		pcs
A00165244	Rope fasteners 5-6 mm		pcs
A00165252	Rope fasteners 6,5-8 mm		pcs
A00165260	Rope fasteners 11-12,5 mm		pcs
A00165268	Rope fasteners 13-16 mm		pcs
A00165468	Wire tape 50mm x 5m		pcs
A00167724	Rope termination 6-8mm, M14, L300	HD8W, spring, 24,7kN	pcs
A00167732	Rope termination 9-11mm, M16, L350	HD10W, spring , 38,5kN	pcs

A00167740	Rope termination 12-13mm, M20, L400	HD13W, spring, 65kN	pcs
-----------	-------------------------------------	---------------------	-----

## Screws

Part. No	PART	DESCRIPTION	QTY.
A00100820	Machine screw MFX M5x10 Brass		pcs
A00100768	Machine screw MFX M4x10 Brass		pcs
A00102097	SecuFast M4x10 Buttonhead		pcs
A00156172	SecuFast M4x40 Buttonhead		pcs
A00166404	SecuFast M4x30 Flathead		pcs
A00102275	Screw loop FZB M6x40		pcs
A00102168	SecuFast M4x20 Flathead		pcs
A00102159	SecuFast M5x20 Flathead		pcs
A00102140	SecuFast M5x10 Flathead		pcs
A00102131	SecuFast M4x10 Flathead		pcs
A00102122	SecuFast M4x20 Buttonhead		pcs
A00102113	SecuFast M5x20 Buttonhead		pcs
A00102104	SecuFast M5x10 Buttonhead		pcs
A00166532	SecuFast M4x30 Buttonhead		pcs
A00100991	Fitting screwdrill tip 4,2x14		pcs
A00102015	Fitting screwdrill tip 4,2x19		bxs
A00102042	Fitting screwdrill tip 4,2x25		bxs

## Shaft

Part. No	PART	DESCRIPTION	QTY.
A00108626	Curve 750mm		pcs
A00108635	Limit curve 1500 mm		pcs
A00108644	Curve 1500mm double		pcs
A00108653	Curve 1750mm		pcs
A00138497	Emergency stop pit , pre wired 2m		pcs
A00138513	Emergency signal car , prewired 5m		pcs
A00106431	IP54-Dosa Shaft kit	240x190x90	pcs
A00145541	Shaft kit	Basic kit shaft kit	pcs
A00106762	Hose 25mm	Flex pipe	m
A00106771	Hose 32mm	Flexpipe	m
A00106780	Hose 25mm HALOGENFRI		m
A00106431	IP54-Dosa Schaktstam	240x190x90	pcs
A00151703	Coupling duct 6mm2		pcs
A00106897	Limit switch XCKS549, Telemeq		pcs
A00172532	Limit switch XCKS549, Telemeq		pcs
A00108626	Curve 750mm		pcs
A00108635	Limit curve 1500 mm		pcs
A00108644	Curve 1500mm double		pcs
A00108653	Curve 1750mm		pcs
A00109134	Skarvskena banprofil		pcs

## S4-C2C

Part. No	PART	DESCRIPTION	QTY.
S4-C2C01	S4-C2C01	CAN-2-CAN	pcs
A00169388	Cable CAN-to-CAN 1m		pcs
A00169396	Cable CAN-to-CAN 2m		pcs
A00170932	Cable CAN-to-CAN 0.5m		pcs

## S4-C2D

Part. No	PART	DESCRIPTION	QTY.
S4-C2D01	S4-C2D01	CAN-2-Differential	pcs
A00169404	Cable CAN-to-Differential 1m		pcs
A00169412	Cable CAN-to-Differential 2m		pcs
A00169420	Cable CAN-to-Differential 4m		pcs
A00169428	Cable CAN-to-Differential 6m		pcs
A00170940	Cable CAN-to-Differential 0.5m		pcs
A00173860	Cable CAN-to-Differential 10m		pcs
A00106520	Cable duct TPD 50x50 24m/frp		frp
A00106539	Cable duct B60xH40 HF		m

## SP02

Part. No	PART	DESCRIPTION	QTY.
SP02	SP02		pcs
A00157180	Adapter TP01 > SP02		pcs

## TP01

Part. No	PART	DESCRIPTION	QTY.
TP01	Print incl. terminal	Endast talenhet kort	pcs
TP01-B	Talenhet i låda inkl högtalare	Talenhet i låda	pcs
TP01-D	Talenhet DIN montage inkl högtalare	Talenhet for DIN-	pcs
A00145461	Låda for TP01, komplett	Inklusive plintsats	pcs
A00145470	Terminals TP01-BD	For binär, decimal	pcs
A00150795	Högtalare for TP01, long cable		pcs
A00150802	Speaker for TP01, short cable		pcs
A00154282	Terminals TP01-C	For CAN-BUS talenhet	pcs
A00157180	Adapter TP01 > SP02		pcs



# Ready to Fulfill Your Needs

P DAHL has its head office in Mölndal, Sweden, where all our development and production is located. Our work force is experienced and have a long history of working with lift systems and lift electronics. Together with a sales office in Haugesund, Norway, and several partners around the world we are ready to help you.



Peter Dahl

CEO

Email [peter.dahl@pdahl.se](mailto:peter.dahl@pdahl.se)  
Phone +46 31 381 21 51



Magnus Kärrman

Sales

Email [magnus.karrman@pdahl.se](mailto:magnus.karrman@pdahl.se)  
Phone +46 31 381 21 67



Elena Iustin

Financial Manager

Email [elena.iustin@pdahl.se](mailto:elena.iustin@pdahl.se)  
Phone +46 31 381 21 65



Magnus Dahlquist

Research and Design

Email [magnus.dahlquist@pdahl.se](mailto:magnus.dahlquist@pdahl.se)  
Phone +46 31 381 21 63



Håvard Aasen

Sales Norway

Email [havard.aasen@pdahl.se](mailto:havard.aasen@pdahl.se)  
Phone +47 629 49 500



Sandra Gustafsson

**Financial Department**

Email [sandra.gustafsson@pdahl.se](mailto:sandra.gustafsson@pdahl.se)  
Phone +46 31 381 21 71



Anders Tyft

**Production Manager  
Electrical Packages**

Email [anders.tyft@pdahl.se](mailto:anders.tyft@pdahl.se)  
Phone +46 31 381 21 81



Nils Abrahamsson

**Production Manager,  
Electronics**

Email [nils.abrahamsson@pdahl.se](mailto:nils.abrahamsson@pdahl.se)  
Phone +46 31 381 21 52



Magnus Jacobsson

**Field Applications Engineer, Support**

Email [magnus.jacobsson@pdahl.se](mailto:magnus.jacobsson@pdahl.se)  
Phone +46 31 381 21 62



Andreas Tejemark

**Field Applications Engineer, Support**

Email [andreas.tejemark@pdahl.se](mailto:andreas.tejemark@pdahl.se)  
Phone +46 31 381 21 66



Christoffer Jaatinen

**Production Manager  
Electrical Packages**

Email [christoffer.jaatinen@pdahl.se](mailto:christoffer.jaatinen@pdahl.se)  
Phone +46 31 381 21 64

